

ULTIMATE Technographics, Inc.
Impostrip On-Demand Econo, Digital and Digital Automation version 6.1
Windows

Please print and read this document before installing your software.

This ReadMe file contains the installation instructions for Impostrip On-Demand version 6.1

Contents

1. Welcome to Impostrip On-Demand v 6.1
 2. Before you install Impostrip On-Demand
 3. System Requirements
 4. Installation
 5. New Features
 6. Bug Fixes
 7. New/Updated Filters
 8. Known Issues
 9. How to Contact Ultimate
 10. Hints
 11. "How To" Section
-

1. Welcome to Impostrip On-Demand v6.1 update

Welcome to Impostrip On-Demand 6.1 upgrade to the most widely used imposition solution for the Digital printing industry. We have put extensive research and development into this version of the product. We do however, realize that communicating with our customers helps us to improve our products, therefore your suggestions and comments are always welcome. Please do not hesitate to send any questions and/or wish list items – all information gathered helps us to create a better product.

Starting with version 6.1, Impostrip On-Demand has been split in three versions: On-Demand Econo (former Offset) On-Demand Digital and OnDemand Automation. Contact your sales representative for more information.

2. Before you install Impostrip On-Demand

To ensure a successful installation of your new Impostrip On-Demand software, please follow the procedures described below. Please note that the application requirements mentioned below do not include RAM needed by the operating system or by other applications, which may be used at the same time as Impostrip On-Demand.

3. System Requirements

System Requirements	
Minimum	Recommended
Processor: Pentium III RAM: 512Mb Hard disk: NTFS - 80 Gb Operating System: Windows 2000 Supporting Software: Adobe Acrobat 7.05 for PDF support	Processor: Duo Core RAM: 2 Gb Hard disk: NTFS - 160 Gb Operating System: XP Pro / 2003, Vista (Vista with dongle version only) Supporting Software: Adobe Acrobat 8 or 9 Professional for PDF support

Note: *The demo copy of 6.1 does not work under Vista. The dongle version does.*

4. Installation

Note: At installation, please be sure to install Impostrip On-Demand on an NTFS drive. **Should the C: drive show up as a FAT drive, please select another drive.**

If you are installing a demo version of Impostrip On-demand, you don't need the security device, commonly called a Passport or dongle.

Impostrip On-Demand Installation

If you already have installed a previous version of Impostrip OnDemand, we recommend backing up the folder and un-install that version. Once done, then install this new version.

Insert the installer CD, which should launch automatically. If it does not launch, select the "Setup.exe" of the installer. Follow the prompts of the installation process.

Once the installation is finished, you will be asked to restart your computer. Make sure you restart your computer before you using the software.

Upgrading from OnDemand v4.x and 5.x

If you already have a software security device, commonly called a Passport or Dongle, and want to use with Impostrip v6 family (any 6.x version) then the dongle must be updated.

If you already have version 6.0, your dongle support must be valid. If not, please contact your sales/support representative.

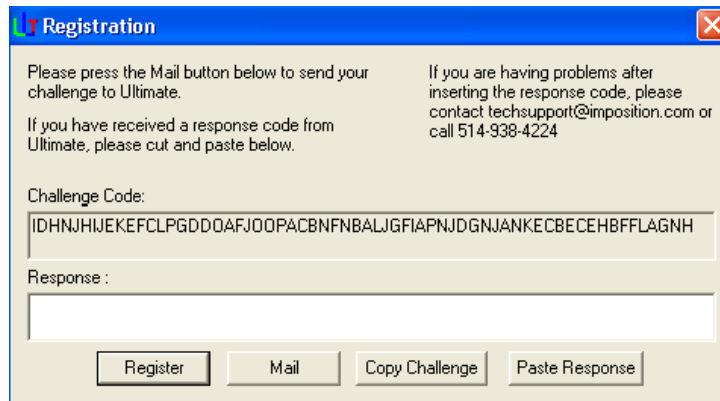
To upgrade your dongle from previous versions or to add support to it, you will need to use the Ultimate Registration Tool that can be found on tools folder of the application folder.

Skip this step if:

- You have received a new dongle with this installer
- You have already contacted Technical Support when the upgrade was purchased and have modified the USB dongle.

Updating M1 dongles to work with V6.1:

1. Launch the **Ultimate Registration Tool**.
2. Select ALL of the text in the **Challenge Code** field and email the challenge code to Ultimate Challenge@imposition.com
3. For every time this tool is run, a NEW challenge code will be presented.



4. When you receive the Response code, paste it into the Response field and click **Register**.

Demos with no Dongles

If you don't have a dongle, the application will run as a 100% functional demo for a period of 5 days. Under special circumstances, the demo period can be extended. To do so, a code ('the challenge code') must be generated from the computer where the demo is installed on. Ultimate will then generate a 'Response' code that will contain the extension in it.

To get the Challenge number and enter the Response Code

1. Launch the application. The "Welcome Window" appears stating that it is demo software. Click on [Authorize]
2. Copy that code in the field "Challenge" and send it to customerservice@imposition.com
3. Ultimate will generate a new code that will extend the demo and it will be sent to you. That code should be copied in the "Response" field.
4. Cop the code into the Response field and click OK

The application will continue the demo for the extended period of time.



5. New Features

Feature	Description
New On Demand Digital Automation	Starting with 6.1, a new version is available. The ‘OnDemand Automation’ includes all of the options in as the Digital version plus: <i>Optimize PDF, Barcodes and XML automation</i>
Center Pages Only Horizontally	This method center pages only horizontally (in the x-axis). By default, Impostrip center pages horizontally and vertically. Good for envelop printing and imposing files of different size using the same template or Hot Folder.
Quark 8 Filter	Impostrip On-Demand 6.1 supports Quark 8 PS files
JDF Output Folder	To print a JDF in a different folder than the other output formats. It is possible to print a JDF and other formats at the same time. <i>(available in Digital Automation 2009 and On Demand Digital only)</i>
JDF with Preview	JDF output has the option to produce a PNG preview of the Signatures being printed. That preview can be use to calculate Ink coverage by JDF consumers. <i>(available in Digital Automation 2009 and On Demand Digital only)</i>
Cut Marks based on PDF Trimbox	A new option is available to draw cut marks around the PDF Trimbox. When off, Impostrip uses the defined template bounding box as the reference to draw the mark. This option is found under [Job Options]
PDF compression preference	"PDF Compression for Output size" works only when selecting v.1.5 or higher <i>(Optimize PDF available in Digital Automation 2009 only)</i>
Support for multiple queues and Job in XML for redirection	Xml Redirection now supports multiple jobs and multiple Queues in one XML file <i>(available in Digital Automation 2009 only)</i>

New Preferences

In **[Configuration – Preferences and JDF Preferences]**

PDF Compression for Output Size	It only works with if PDF version selected under “Print” is 1.5 or higher.
Place Cut marks on PDF Trimbox	The cut marks reference follows the PDF Trimbox and NOT the Bounding box size of the template.
JDF Output Folder	To print a JDF in a different folder than the other output formats
JDF Preview Resolution	To set the resolution of the preview created with JDFs

6. Bug Fixes

Incident Number	Fixes
5724. Barcode generation freezing Acrobat	When using many barcodes in the imposition, Acrobat may stop responding. It is now fixed.
5721. PDF Compression for Output size	This option has changed to ""PDF Compression for Output size (PDF 1.5 or higher)
5697. JDF Preferences not accessible	The menu option "JDF Preferences" was not opening. It is now corrected.
5691. Corel Draw 13 Filter not centering pages	The CorelDraw 13 PS filter was not properly recognizing pages. It is now fixed.
5716. Spot color mapped to grayscale	Spot colors were printing in Grayscale with some PDF files when printed in a digital printer. This is now fixed.
5735. Color in Slug Line Preference not having an effect	Deselecting 'Color" in "Sig ID and Spine Configuration" do not have an effect. It is now corrected.
5677. Slug line not printing when imposing files from InDesign with PS output	With some files from Mac InDesign CS 3, the imposition failed to print the slug line when the output format was PostScript. This happened only when BOTH 'Output Page Marks Before Pages' and 'Output Page Marks After Page' were off.
5676. Preview of some InDesign pages showed wrong rotation	Preview of some InDesign CS 3 pages were rotated. Output was ok though. This is now fixed. The rotation seems to be related to OS X. so make sure latest version update of OS is installed.
5675. InDesign Files auto-adjustment and filter recognition	In Design CS 3 PostScript were auto adjusting and were not being recognized as being from InDesign.
5630. Illustrator CS 2 Files were not recognized	PostScript files created with CS 2 Illustrator could not be identified by Impostrip. It is now fixed.
5621. Slug line color information with pre-separated PostScript files	When Imposing pre-separated PostScript files. Color information printed on top of each other in the slug line. This is now fixed.
5593. Page Adjustments with JDF output	Page adjustments done in Impostrip did not have any effect in JDF output. It is now corrected.

7. New/Updated Filters

New/Updated Filters In current version	
NEW	UPDATED
Quark 8	In-Design CS 3
	Illustrator CS 2
	CorelDraw 13

8. Known Issues

Hot Folder Limitation over the Network

When Hot Folders are in a Network Drive and OnDemand in a different computer, OnDemand will only support as many as 20 or so hot folders. This has to do with the number of ports Windows allows opened over the network. To avoid this limitation, install OnDemand in the same computer where the Hot Folders are.

9. How to Contact Ultimate

ULTIMATE 300 Léo-Pariseau, Suite 1825 Montreal, Quebec CANADA H2X 4B3 Telephone: +1-514-938-9050 Fax: +1-514-938-5225	Technical Support: +1-514-938-4224 Email: techsupport@imposition.com Support Forum: www.impositionforum.com Website: http://www.imposition.com Your <i>dongle number</i> is shown in the "About Impostrip On-Demand" Window
---	---

10. Hints.

This section is to serve as "refresher" to some of the functionalities in Impostrip On-Demand and also to explain how to make production easy when using the program. If you have hints, tricks to share, please send it to techsupport@imposition.com or use the Imposition Forum at www.impositionforum.com and your hints will be included in the next read me file.

Differences of the 2 versions: Econo and Digital*

Starting with version 5.0, Impostrip On-Demand has been split in two versions: On-Demand **Digital** and On-Demand **Offset**, Both products have the same imposition core with some difference in some features. The Digital version contains all the features available in the Offset version plus more options for Digital printing. Features of Digital not available in the Offset version

Dynamic Imposition	Ability to reuse an imposition layout regardless of the page sizes of a given job
Repeating Booklets Collating Method	Mix of Saddle Stitch with Perfect Bound collating method. Also known as Nested Saddle Stitch.
Signature Group Printing	Designed to work with variable data files.
JDF Output	Ability to Output JDF files, Populated or Non-Populated
HP.IMP	Ability to Export Layouts in the HP-Indigo .IMP format.
Dynamic Paper Calculation	Ability to resize the paper based on the number of ups and trim page size.

* The OnDemand Automation includes all features of the Digital version plus XML processing module, BarCodes module and Optimize PDF feature.

Dynamic vs. Static Layout.

Impostrip On Demand uses the concept of Dynamic Layouts (Templates), where page and paper size can be changed in Job Setup using the same Template. This ability allows users to reduce the number of templates layouts to use.

Dynamic Paper

The Paper size defined in the Layout can be changed dynamically when creating the job by defining the size in Job Setup.

Dynamic Pages

The trim size of the page in the original Layout can be changed from job to job by setting the trim size in Job Setup, adapting the layout to every job

11. How To's Section

Using Custom Marks.

Impostrip On-Demand has the ability of add custom marks. Custom marks are added to Templates and they can be applied to Sheets or Pages in the Sheet, from which a position offset, orientation and other settings and be set based on the anchor point of the paper or pages.

Requirements

- a. Accepted format for custom marks: EPS and PDF
- b. For PDF output, custom marks applied must be in PDF format.

Mark Access

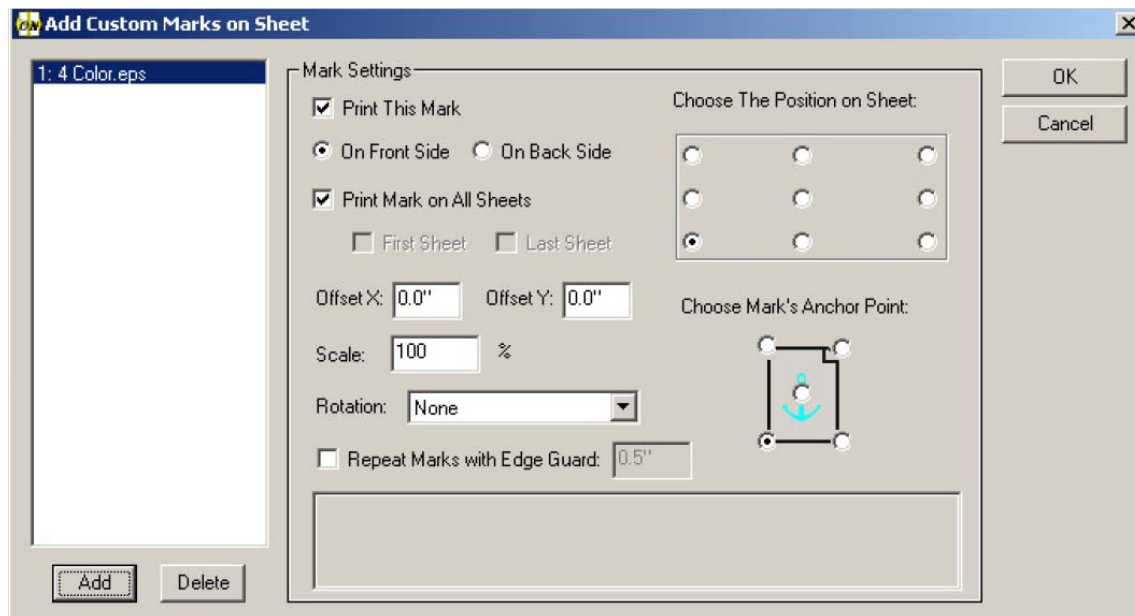
1. Marks must be copied into the program folder \ImpoMarks\Custom Marks.
2. Launch Imposstrip On-Demand.

Imposstrip On-Demand now offers the ability to tag custom marks in the template used for the imposition.

- Either type of
- Marks can be anchor on the Paper or on Pages.
- To tag the mark, edit the template and used the menu option [Tools – Add Sheet Custom Marks] or [Tools – Add Page Custom Marks]
- Set options to print in Front and/or Back side, All Sheets, First and/or Last sheet only, scale factors, position offsets, mark orientation and anchor points.

Applying the mark

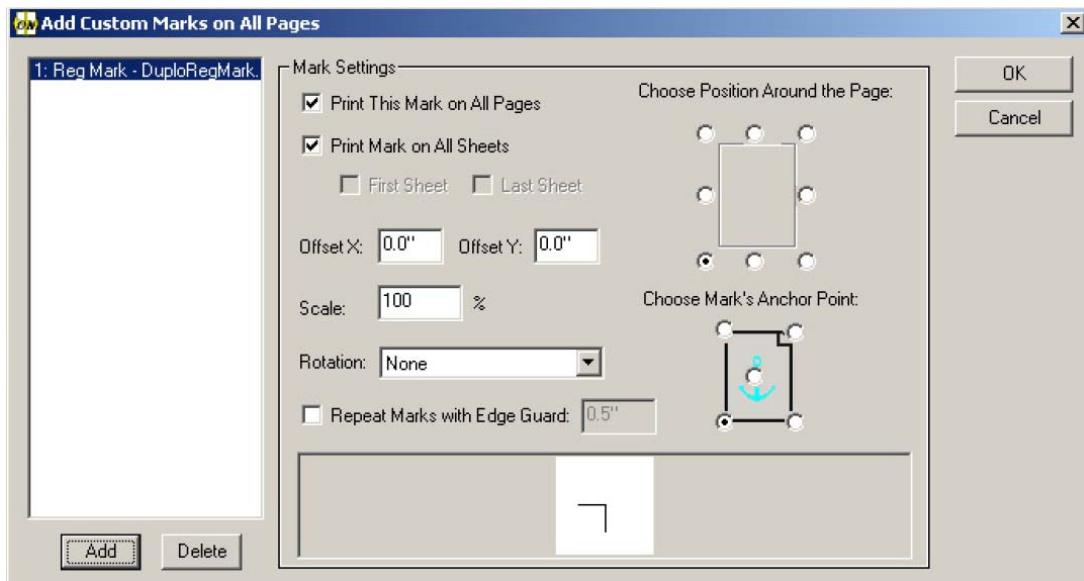
Marks on Sheet



- Create or Edit a template
- Use menu option “Tools – Add Sheet Custom Marks”

- Click on Add. From the resulting list, select the mark you want to use. More than one mark can be added to the template. Each mark may contain different parameters.
- *Mark Position*. For each mark, sets the option in the right pane of the Window: anchor point of pages, anchor point of mark, X Offset (negative value = move left), Y Offset (negative value = move down), scale factor and rotation.
- *Sheet side*. Define whether to print in Front or Back of sheets. If both are required, add twice the marks and define the side placement for both.
- *Sheet inclusion*. Define whether mark will print in ALL sheets or only first or last Signature.
- Mark repetition. Use to repeat the mark a defined number of times. Edge Guard refers to a start-end margin added to the repetition. This setting is mainly use to repeat color bars.

Marks on Pages



- Create or Edit a template
- Use menu option “Tools – Add Page Custom Marks”
- Click on Add. From the resulting list, select the mark you want to use. More than one mark can be added. Each mark may contain different parameters.
- *Mark Position*. For each mark, sets the option in the right pane of the Window: anchor point of paper, anchor point of mark, X Offset (negative value = move left), Y Offset (negative value = move down), scale factor and rotation.
- *Sheet side*. Define whether to print in Front or Back of sheets. If both are required, add twice the marks and define the side placement for both.
- *Sheet inclusion*. Define whether mark will print in ALL sheets or only first or last Signature.
- Mark repetition. Use to repeat the mark a defined number of times. Edge Guard refers to a start-end margin added to the repetition. This setting is mainly use to repeat color bars.
- *Note*: marks apply to all pages in the template.