

ULTIMATE Technographics Inc.
Impostrip Solo v7.3 for OS X

Please print and read this document before installing your software.

Important information has been included in this document concerning your Impostrip Solo software.

Impostrip Solo has been developed to run in native OS X. Impostrip Solo jobs, marks and templates created in earlier versions of Impostrip Solo are 100% compatible with this release, no conversion is necessary.

Contents

1. Welcome to Impostrip Solo v7.3
 2. Before you install Impostrip Solo
 3. System Requirements
 4. Installation
 5. New Features
 6. New/Updated Filters
 7. Bug Fixes
 8. Known Issues
 9. How to Contact Ultimate
 10. How To's Section
-

1. Welcome to Impostrip Solo v7.3

Welcome to Impostrip Solo, the most widely used imposition solution for the printing industry. We have put extensive research and development into this version of the product. We do however, realize that communicating with our customers helps us to improve our products, therefore your suggestions and comments are always welcome. Please do not hesitate to send any questions and/or wish list items – all information gathered helps us to create a better product. These may be emailed to <mailto:techsupport@imposition.com>

2. Before you install Impostrip Solo

To ensure a successful installation of the software, please follow the procedures described below. Please note that the application requirements mentioned below do not include RAM needed by the OS or by other applications, which may be used concurrently with Impostrip Solo Solo.

3. System Requirements

| System Requirements | |
|--|--|
| <u>Minimum</u> | <u>Recommended</u> |
| <u>Processor:</u> Macintosh G4 RAM: 256 Mb Hard disk: 40 Gb Minimum Operating System: Mac OS X v 10.3 "Panther" Supporting Software: Adobe Acrobat 6 Professional or newer for PDF support* | <u>Processor:</u> Macintosh G5 RAM: 512 Mb Hard disk: 80 Gb Minimum Operating System: Mac OS X v 10.3 "Panther" or higher Supporting Software: Adobe Acrobat 6 Professional for PDF support |

Notes:

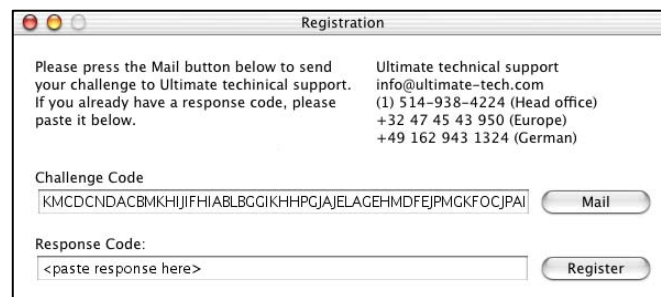
- For the processing of PDF files, Adobe Acrobat 6 must be installed; it is **not** possible to use Adobe Acrobat Reader.
- This version of the software requires OS X.3 (Panther) or higher. It will not work with a version older than OS X 10.3
- *Impostrip Solo can work with Acrobat 5.x only if both Impostrip Solo client and Impostrip Solo Server are both for Mac.

4. Installation

Upgrading from v6.x

The software security device, commonly called a Passport or Dongle, must be updated to run Impostrip Solo v7. This is easily done by using the Ultimate Registration Tool that can be found on the installer CD. If you have already been in contact with Technical Support when the upgrade was purchased and have modified the USB dongle please skip this step.

1. Launch the **Ultimate Registration Tool**.
2. In the **Challenge Code** field mail the challenge code to Ultimate Challenge@imposition.com



3. When you receive the Response code, paste it into the Response field and click **Register**.

Impostrip Solo and Impostrip Solo Server Installation

1. Double click on the Impostrip Solo v7 Installer icon.
2. When presented with the splash screen, click on the Continue button or press Return. You will then be presented with this important Read Me file, click Continue when you are ready to proceed. This will open the Impostrip Solo Installer window.
3. The default setting for the installer will install all components (Impostrip Solo (All Files)). This will install both Impostrip Solo Client, Impostrip Solo Server applications and all supported files. In the Install Location dropdown box, please specify where you would like to install Impostrip Solo with Select Folder. Click on the Install button or press Return to proceed with this install option.
4. Should you need to re-install only parts of the Impostrip Solo package, for example after deleting certain components, select individual items from the scrolling list of Impostrip Solo components. You may select the Custom Install folder (for Impostrip Solo or Impostrip Solo Server), the Tools folder, the Marks folder, or the Tutorial files folder. Simply select the desired component and click on the Install button. Repeat for each additional component. To return to the default setting, click on the Impostrip Solo (All Files) folder.
5. Two dialogue boxes will pop up advising if installation has been successfully completed.

Client/Server Configuration:

Only required when Impostris Solo and Impostris Solo Server are not on the same computer

A logged on user with Admin access is required to perform some of this setup

Read Carefully: Apple's new OSX system architecture requires a new procedure for connecting a Mac OSX Client to a Mac OSX Impostris Solo Server. When connecting between computers, please use the **afp** protocol under "Connect to Server", like this:

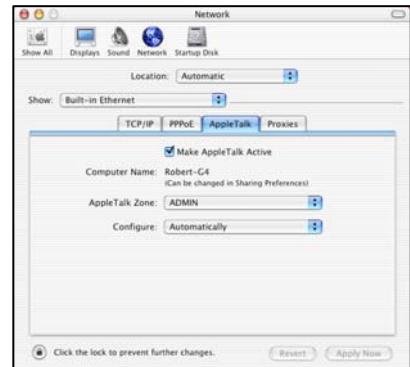
afp://xxx.xxx.xxx.xxx, where xxx are the actual numbers of the IP address.

Impostris Solo must be linked to the remote Impostris Solo Server in order for communication and file processing to take place. To accomplish this:

Verify that the network is operational and that **AppleTalk** services have been activated. In the **Internet & Network** section of the System Preferences choose **Network**



In **Network** choose the **AppleTalk** tab and verify if AppleTalk is currently active. If AppleTalk is not running select **Make AppleTalk Active** and click on **Apply Now**.



Note: If the small **Lock** icon in the bottom left corner is locked it will be necessary to enter the **Admin Password** in order to make any changes.



Start.

In the **Internet & Network** section of the System Preferences choose **Sharing**. In the **Services** tab make certain that **Remote Apple Events** is selected. If necessary, click on

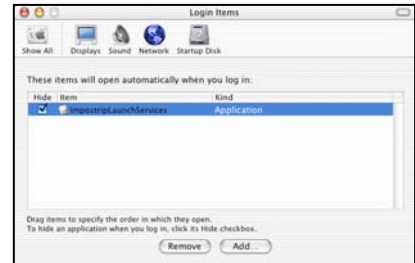


Launch Impostrip Solo Server and make certain that the network has been configured as previously described. Impostrip Solo Server and Impostrip Solo Client communicate via AppleEvents. Mac OSX, Apple's new operating system, has changed the method in which programs are linked and AppleEvents are exchanged between computers on a network. To ensure communication between Client and Server Apple computers running OSX on a network there is now a new communication application called **Impostrip SoloLaunchServices** that can be found in the same directory as the Impostrip Solo Server. Impostrip SoloLaunchServices must be launched and running for AppleEvent communication between the Client and Impostrip Solo Server to take place.



Hint: Add Impostrip SoloLaunchServices to the **Startup Items**. Login Items can be accessed from the **System then Account** section of the **OSX System Preferences**. Select the user Account to be used and go to **Startup Items**.

Doing this will ensure that if the computer is restarted for any reason the communication layer between Impostrip Solo and the Impostrip Solo Server will be running. Obviously Impostrip Solo Server can also be added as a Login Item to ensure it is always available to client Front-ends.



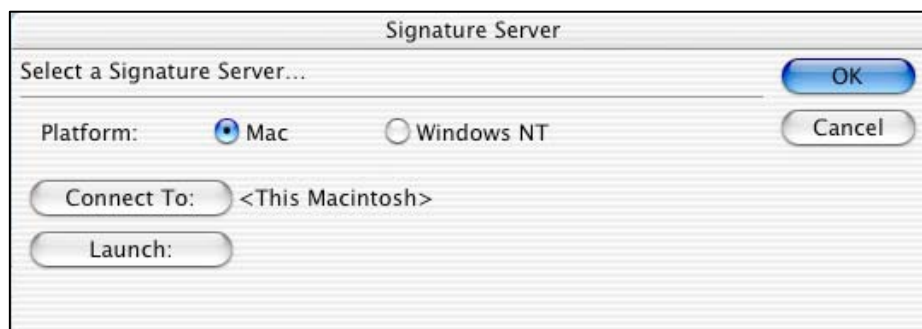
Impostrip Solo Server must be able to "see" the PostScript files to be printed. For this to occur, it must be able to follow the same file path as Impostrip Solo, the exception being when documents are in the same shared folder as Impostrip Solo Server. The configuration instructions depend on where the PostScript files will be located:

If the PostScript files are located on the same computer as Impostrip Solo Front-end, the entire volume holding the files must be shared and mounted on the desktop of the computer running Impostrip Solo Server.

If the PostScript files are found on a file server (Windows, UNIX or Macintosh), the same volume (or folder) that is mounted on the desktop of the Macintosh running Impostrip Solo must be mounted on the desktop of the computer running Impostrip Solo Server.

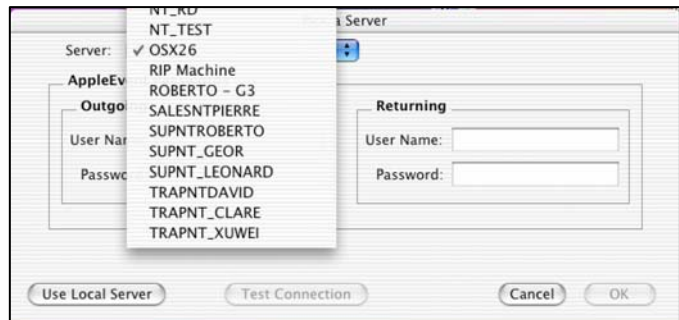
If the PostScript files are located on the computer running Impostrip Solo Server, and in order not to share the entire volume, the PostScript and Impostrip Solo Server must be located in the same shared folder.

For more information on Macintosh File Sharing (including mounting volumes, establishing restricted access, etc.), please consult your Macintosh User Guide.



On the client Macintosh where the Impostrip Solo Client will be accessed make sure the volume of the Macintosh running Impostrip Solo Server has been connected to and is available. Launch Impostrip Solo Front-end and select **Impostrip Solo Server...** from the **File** menu. The *Select a Impostrip Solo Server...* dialogue box will appear. Make sure the Mac radio button is selected and click on **Connect To**:

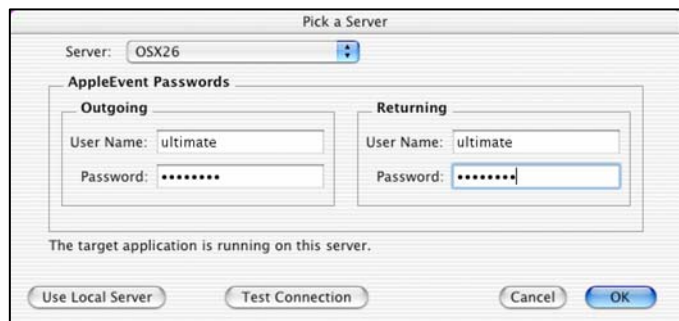
A new dialogue, **Pick a Server**, is presented. This dialogue is used to locate and choose the remote Macintosh where the Impostrip Solo Server is running as well as to test the communication protocol between the Impostrip Solo Front-end and the Impostrip Solo Server (validate that Impostrip SoloLaunchServices is running remotely). This is also the location for entering the **AppleEvent Passwords**. These passwords allow for Admin access between the Impostrip Solo Front-end and the Impostrip Solo Server to exchange AppleEvents. Select a valid user on each Macintosh making certain that the selected user has Admin rights. Users and rights can be verified/modified in the **System Preferences**.



To begin with select a Server from the dropdown menu **Server**. At this point Impostrip Solo is scanning the entire network for *any* computer that is accessible or available as a server. Note: *by default, there is a 20second delay while the entire network is scanned for available servers*. This can be changed in Impostrip Solo Preferences, under 'User Interface', using the option 'Time to wait for remote servers'.

Choose the server where Impostrip Solo Server is running.

It is now necessary to enter the **AppleEvent Passwords**. The **Outgoing** fields are for the Admin User Name and Password on the Macintosh running Impostrip Solo Server. The **Returning** fields are for the local Macintosh.



When completely filled in click **Test Connection**. If the above steps have been followed the message "The target application is running on this server" will be displayed. Click **OK**.

The communication layer between the Impostrip Solo Front-end and the Signature has now been established.

Hint: *To simplify user accounts, passwords and admin privileges it is sometimes easier to create new accounts on each Macintosh with Admin privileges. To do this select Accounts from the System section of the System Preferences.*

For Client Server connection, please remember:

- Impostrip SoloLaunchServices must be running on the server and **cannot** be renamed. You may want to auto launch hidden in the Startup Items of Accounts, in System Preferences.
- Accepting Remote AppleEvents **MUST** be active on both sides.
- AFP (Apple File Protocol) has to be active on the server.
- Impostrip Solo Server must be running on the server when you setup the connection. It will launch on printing after the setup is done.
- Also the connection is kept by IP address, so in DHCP environments the connection may be lost. There is a message at startup when this happens.

5. New Features.

Multilingual support

This Mac Front-End includes the following languages: English, Spanish German & French. To switch language, select the Impostrip application and do "Command + I" in the keyboard. Extend the Language tab and check only the one to use.

Applying Mirror (wrong reading) to pages on a Template / Signature

It is now possible to apply the Mirroring effect to any page on a Template / Signature. Available under Template Setup, it is part of the Tools Palette. Select the tool and apply it by clicking on the page that must get the wrong reading. Alternatively, it is possible to select all or some pages and apply the tool. The effect is visible in the screen preview as well as in the output.

Print (Do) Folding Marks Regardless of Gutters

Previous to this version, folding marks applied between pages with no gutters (space between pages set to zero) did not print. This option allows to overprint the folding marks even when there is no gutter space between pages where the mark is.

Available under menu option [*Configuration – Preferences – Output*]

Show Folding Marks to Scale

With this option, length or width adjustments applied to folding marks reflects in the screen preview.

Available under menu option [*Configuration – Preferences – User Interface*]

Automatically Select All Composite Colors

When imposing composite files with Pantone Colors, this option selects all CMYK and Pantone colors for printing (in Color Sequence,). When this option is not active, Impostrip Solo selects only CMYK. With some RIPs, this may convert Pantone Colors into CMYK.

Available under menu option [*Configuration – Preferences – User Interface*]

Acrobat plug in (v.2.3)

There is a new and improved Acrobat Plug-in for Acrobat 6.x. It is installed automatically at installation time, provided that Acrobat 6.0 is already installed. A copy of the plug-in can be found in the Tools folder of Impostrip Solo.

Helvetica Font in Slug Line embeds in PS and PDF output

Impostrip Solo embeds automatically the font Helvetica, used in the Slug Line, with both Postscript and PDF output.

Automatic Selection of level 2/3 device with level 2/3 PPD

With some custom PPDs that support Level 3 or Level 2, the Level 2 Option is not available. In this case, Imposstrip Solo now selects the corresponding level automatically.

Mirroring Marks Applying Marks to all Signatures at once

Mirroring Marks on all plates. When designing a Template, marks (including Color Bars) can be applied to every page in every plate (back and front and multiple webs) simultaneously. Use the following Key + Click combination when applying the mark:

| | |
|--------------------------------|--|
| | |
| Shift + Control + Option (Alt) | All Pages in all Signatures |
| Option + Shift | All pages in all Web Signatures |
| Shift or Control | Mirror in the front and back page individually |
| Option | Apply mark to all pages in one side of the Signature |
| Control + Option | Apply mark in all pages in both sides of one Signature |

Compatibility of Preps Templates

Imposstrip has the capacity to import Preps templates and its marks. Please refer to the “How to’s” section at the end of this document for more details.

Add permanent adjustments to color bars with Imposstrip Color Bar Editor.

When creating a color bar with Imposstrip Color Bar Editor, it is now possible to add adjustments settings to the color bar so that when applying the mark, those adjustments will also be applied.

In the main Color Bar Editor Window, there is a new bottom called “Adjustments”. Clicking on that option opens the Imposstrip Custom Adjuster, where offsets to position, repeating factors, orientation, etc, can be changed. Those values become default values for that Color Bar and will be automatically applied when using that Color Bar.

Outline Trim Area prints in a custom color

The “Outline Trim Area” can now optionally print in a different plate color than the existing colors in the imposition. By default, the outline prints in every plate.

To print the outline in a different color, follow these steps:

- a. Under the menu option [Configuration – Preferences - Output] define the name of the custom color to use and the CMYK equivalent values of the color.
- b. In Printer Setup, use the option [Outline with Custom Color].

Indexing extracts Tiff Previews from EPS files for Imposstrip Preview

When Indexing generates preview, the process extracts Tiff previews from EPS files. Those Tiffs are used to display Imposstrip's screen previews, accelerating in this case, the display of the preview.

This works with the following Tiff compression formats: 8 bit sample rate/RGB, RGB Palette or CMYK/PackBits or LZW (or none obviously). Other compression formats are not supported, in which case, the whole EPS file is RIPPed to get the preview.

They must have the same horizontal and vertical resolutions and are assumed to be in standard rotation.

Over-passing Filter Scanning with EPS files when indexing

A new option has been added to Job Setup, "EPSFs Use EPSF Filter Regardless of Source". To be used when imposing EPS files from any application.

This option speed up the indexing process when imposing EPS files. If a file is not EPS, it will be indexed normally.

New Centering Option: Center Pages Only Horizontally

This method center pages only horizontally (in the x-axis). By default, Imposstrip center pages horizontally and vertically. When used, this options center-to-center EPS files and PDF pages when the option "Use MediaBox over Trimbox" is active.

Color information in the Slug line prints properly when imposing Composite files

Color information is included in the Slug Line when imposing composite PS files, provided that color information is available in "Color Sequence" and Color information is requested for the Slug Line. In previous versions, only "Black/Composite" was printed.

Automation (Hot Folder based imposition) can now be configured with Mac Front-Ends when using Windows Imposstrip Server.

Hot folder configuration can now be set-up using Mac Imposstrip and Windows Imposstrip Server.

Hot folder must be visible to Imposstrip Server and after the front-end has done the setup, the hot folder must be activated using Windows Imposstrip Server.

New Cut Bleed Mark available

There is now a new cut bleed mark that images only ¼ of an inch (6.35mm) in length. Available under Cut Marks tool in the Marks Tools Palette.

6. New/Updated Filters

In current 7.3 .

| New/Updated Filters | |
|---------------------|------------------------|
| NEW | UPDATED |
| CorelDraw 12.0 | Acrobat 6 (Postscript) |
| Quark 6.5 | |

From 7.2

| New/Updated Filters | |
|---------------------|------------------------|
| NEW | UPDATED |
| | Acrobat 6 (Postscript) |
| | Illustrator CS |
| | Freehand 10 |

From 7.1

| New/Updated Filters | |
|---------------------|----------------------|
| NEW | UPDATED |
| In-Design CS | SMI EDICOLOR |
| Illustrator CS | Illustrator 9 and 10 |

From 7.0

| New/Updated Filters | |
|----------------------------------|--------------------|
| NEW | UPDATED |
| Adobe Acrobat 6 (PDF 1.5) | In-Design 2.0 |
| Adobe Acrobat 6.0 (PS) | PageMaker 7 |
| ArtWorker Pro 7.0 | DCS filter |
| CorelDraw 11.0 | Quark 5 Windows |
| Fit 4.0 | Quark 4.1 Windows. |
| FrameMaker 6.0 (Mac) | TIFF Filter |
| FrameMaker 6.0 (Windows/NT/2000) | |
| Printshop Mail 4 | |
| QuarkXPress 6.1 | |

7. Bug Fixes

In-RIP Separation does not need to set the “Color Sequence” list to print.

When using the level 2/3 option “Use In-RIP separation”, Imposstrip Solo errors out if user did not select Color Sequence under Document List.

PDF Output with CMYK and spot Colors

When printing the Signature ID for an imposition containing spot colors, PDF output does not mix colors.

Recognition of Pantone Colors in PDF files

With some PDF, color Sequence did not report Pantone information. Imposstrip Solo is now recognizing those colors.

Recognition of Pantone Colors in Composite PS files from Acrobat 6.x

Imposstrip Solo reports now in Color Sequence, Pantone Colors in Acrobat 6.0 Composite PS files.

Edited Template saves now when adjusting marks

When editing marks on an existing template, Imposstrip Solo now saves the changes.

Origami Window does not “freeze” when making other process active

When working in the Origami Window and selecting another OSX running process, coming back to Origami is ok now.

Gradation effect is maintained with PDF Output

Gradation effects in text or images are maintained in the final PDF output file. (Log 4545).

Improved color bars created with Color Bar Editor

With PDF output, some spot color in the color bar where not printing. This is now working properly (Log 4547).

Previous version preference file are now properly recognized

Imposstrip 7.2update did not recognized Punch settings from previous versions. This is now fixed (Log 4584).

Custom Level 2/3 PPDs options are automatically used

When using Custom or OEM Level 2/3 PPD, Imposstrip automatically uses the Level 2/3 options available in that PPD (Log 4585).

DCS files centering properly in the preview.

Impostrip preview from DCS files was not centering pages. It is now fixed (Log 4623).

Japanese names in Slug line printing fine with PDF output

Japanese names in slug line are printing ok now with PDF and PS output when using Japanese user prolog (Log 4625).

Rectangle shapes in color bar editor are respected with PDF output

With PDF output, rectangle shapes defaulted to squares equally on the X and Y axis (Log 4639).

Option [Bleed marks off press paper] in Printer Setup is having an effect

That option was not having any effect when printing. It is now fixed (Log 4635).

Units of measurements (in Preferences) respected in Template Setup.

When using the Metric System in the preferences, adding values to Paper/Plate and Trim Page size does not default to inches if "mm" or "cm" is not added to the values (Log 4597).

Adjusting Edge Guard to a high value to Color Bar does not affect printing

Under Impostrip 7.2, when using a high number for Edge Guard values in Mark Adjuster, Color Bars from Color Bar Creator had the height of the color bar reduced (Log 4604).

Automatic refreshment of back plate when mirroring marks

Presently, when mirroring marks, the back of the Signature does not need to be active for the mirrored marks to appear (Log 4606).

Preference "Use PDF MediaBox over TrimBox" works now with Hot Folders

Selecting that option did not have any effect when working with Hot Folders. It works fine now,. To make it work, select the option and re-configure the hot folder that will use it (Log 4650)

8. Known Issues.

PDF Output and repeated Color Space when using Slug Line

Including the Slug line when printing PDF output from Imposition creates 2 color spaces in the resulting PDF file. Most RIPs will map color appropriately. With EFI Oneflow RIP, the 2 color spaces duplicate the colors: page information and Slug line information (2 plates for Black, 2 for Cyan, etc). We are investigating for ways to change this.-

9. How to Contact ULTIMATE Technographics

ULTIMATE Global Headquarters
300 Léo-Pariseau, Suite 2001
Montreal, Quebec
CANADA H2X 4B3
Telephone: +1-514-938-9050
Fax: +1-514-938-5225

Technical Support: +1-514-938-4224
Email: techsupport@imposition.com
Website: <http://www.imposition.com>

10. How To's Section

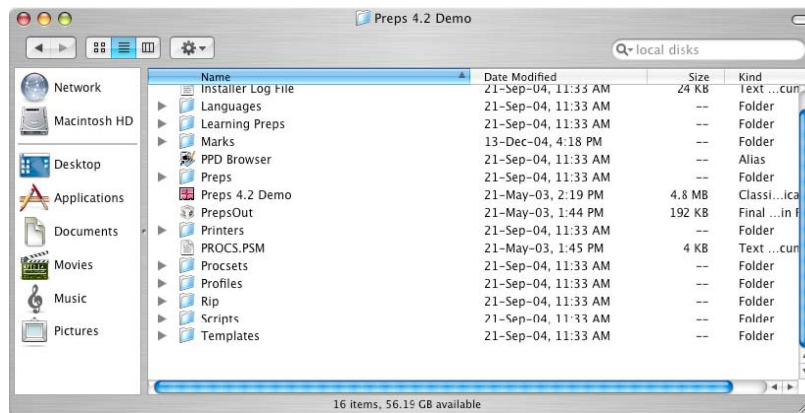
IMPORTING PREPS® TEMPLATES IN IMPOSTRIP

Steps involved in converting Preps templates to Impostrip are as follows:

1. Copy Preps marks into the User Defined Marks Folder of Impostrip.
2. Select a Preps template to import.
3. Validate the output for marks and positioning.

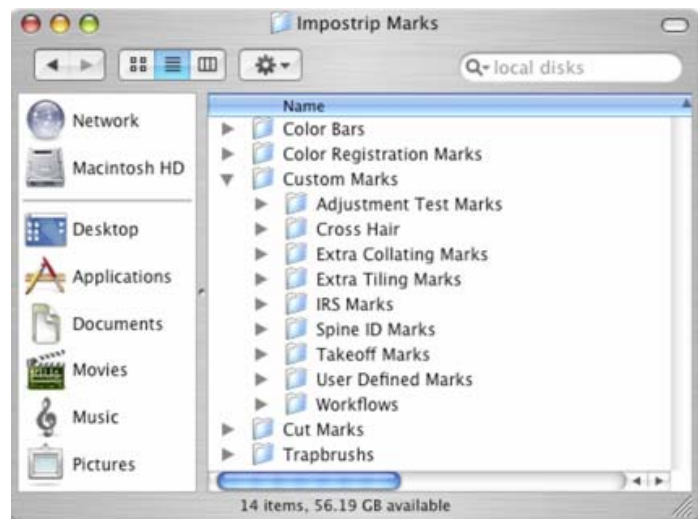
Steps

1. Locate the Preps® Marks folder into the Preps® main folder.

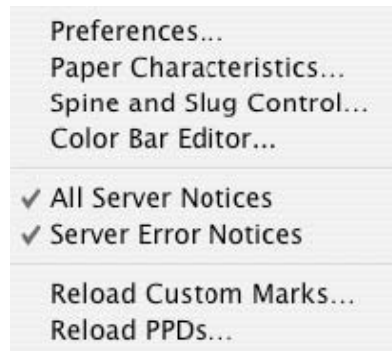


2. Select all files located in this folder and drag and drop or copy into the User Defined Folder into the Mark's folder of Impostrip: Applications > Impostrip > Impostrip Marks > Custom Marks > User Defined Marks

In a Client/Server configuration, Signature Server must have access to the mark to include them at printing time. In addition to copying the marks in the Impostrip marks folder, a copy of the marks must be made to the "Impostrip Server Custom Marks" folder, found in the same directory as Impostrip Server.



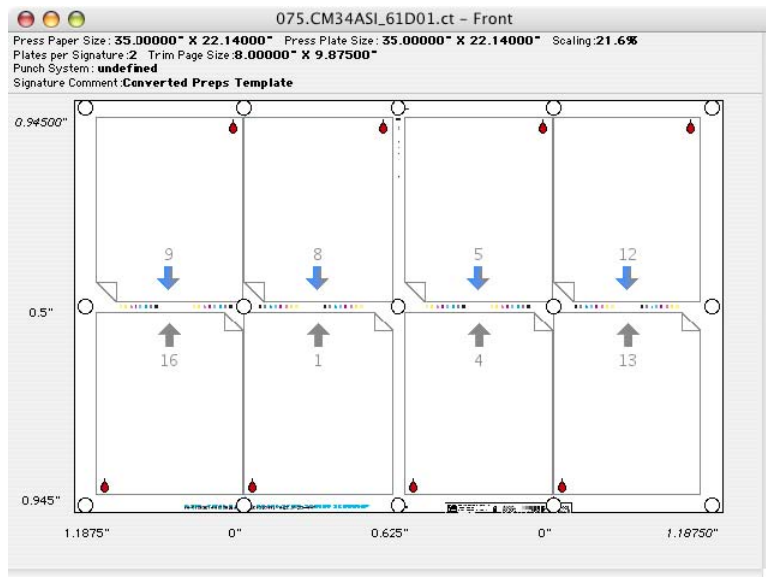
3. Quit and re-launch Imposrip to load the new User Defined Marks, or Reload Custom Marks.



4. Marks are now available in Imposrip.

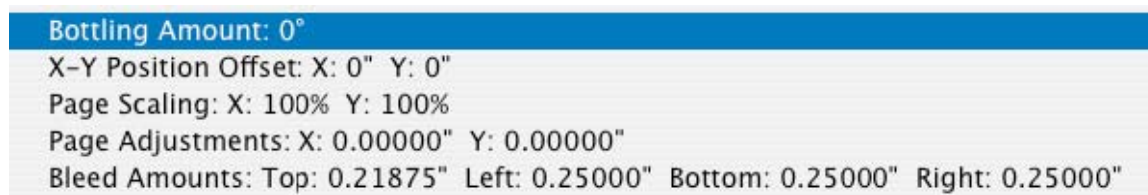
5. Open Template or use it from the Signature List, just like if is an Imposrip Template.

6. Imposrip Template Window of an imported Preps 4.3 template.



Press Size, Plate Size, Page trim size and all imported marks are display on screen. Signature and gutter position are also shown along with the Imposition numbering.

7. Each page will also displays the Effective Adjustment on any selected page



Using Mac Clients and Windows Imposrip Server.

When printing using Signature Server Windows, make sure that:

- a. Copy the Preps Marks in the Marks Folder used by Signature Server. By default this folder is in:

`\\ImpoSigServer\Marks` folder, located in the same directory as Signature Server.

- b. Alternatively to copying the marks, it is possible to increase the Preference “Marks in Job Size Limit” of the Mac Front-end to a value that will allow including all marks in the job as part of the job file. If the increased value is high enough to fit all marks, there is no need to copy the marks in the “Impostrip Server Custom Marks” folder. This is very handy when using Windows Impostrip Server or when the Impostrip Mac Server is not in the same computer as the Front-end.

Note:

This version does not support Preps templates with different size pages (independent pages).