

ULTIMATE Technographics, Inc. Impostrip On-Demand version 5.2

Please print and read this document before installing your software.

Important information has been included in this document concerning your copy of Impostrip On-Demand software. This ReadMe file contains the installation instructions and important information for Impostrip On-Demand version 5.2

Contents

1. Welcome to Impostrip On-Demand v5.2
 2. Before you install Impostrip On-Demand
 3. System Requirements
 4. Installation
 5. New Features
 6. New/Updated Filters
 7. Bug Fixes
 8. Known Issues
 9. Hints
 10. How to Contact Ultimate
 11. How To's Section
-

1. Welcome to Impostrip On-Demand 5.2

Impostrip On-demand, the best imposition solution for Print-On-demand and small printers. We have put extensive research and development into this version of the product. Your suggestions and comments are always welcome. Our development team will take all suggestions into consideration.

Starting with Mac version 5.1, Impostrip On-Demand has been split in two versions: On-Demand Digital and On-Demand Offset, in order to serve better 2 niches of the low-end imposition market. On-Demand Digital contains all the options available in the Offset version plus options that pertain to the On-Demand Digital printing environments. The Offset version is aimed at the offset printing market and new developments will be done to this version to make the product more responsive to the needs of that part of the industry. Users of previous versions of On-Demand are entitled to get the Digital if desired, since that version is the Offset version plus more options for Digital printing, both at the same time. Contact your sales representative for more information.

2. Before you install Impostrip On-Demand

To ensure a successful installation of your new Impostrip On-Demand software, please follow the procedures described below. Please note that the application requirements mentioned below do not include RAM needed by the operating system or by other applications, which may be used at the same time as Impostrip On-Demand.

3. System Requirements

System Requirements	
Minimum	Recommended
Processor: Macintosh G4	Processor: Macintosh G5
RAM: 128Mb	RAM: 1 Gb
Hard disk: 40 Gb	Hard disk: 80 Gb
Operating System: 10.3 or higher.	Operating System: Mac OS X v 10.4.2
Supporting Software: Adobe Acrobat 6 for PDF support	Supporting Software: Adobe Acrobat 7 Professional for PDF support

See Documentation "How to configure Acrobat" with Impostrip On-demand.

Notes:

- For the processing of PDF files, Adobe Acrobat 6 or 7 must be installed, Acrobat Reader is **not** enough.
- This version of the software works with OS 10.3 (Panther) or higher and/or 10.4 (Tiger).

4. Installation

If you are installing a demo version of Impostrip On-Demand you don't need the security device, commonly called a Passport or dongle. Impostrip On-Demand demo will work for 5 days once first installed and launched.

Impostrip On-Demand for OS X Installation – Part 1

Skip to Part 2 if you are installing a demo version of Impostrip On-Demand.

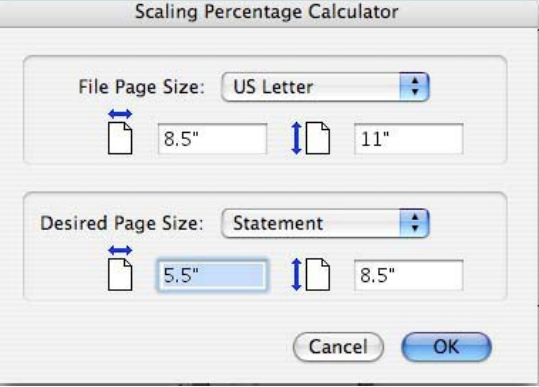
Your computer must be completely shut down when attaching the dongle to the USB port. Once attached, restart your computer.

Impostrip On-Demand Installation – Part 2:

1. Insert the Impostrip CD-ROM disk in the appropriate drive.
2. Double click on the Impostrip On-Demand CD-ROM icon.
3. Double-click on the Impostrip On-Demand Installer Application.
4. The default setting for the installer will install Impostrip On-demand and all supported files. In the Install Location dropdown box, please specify where you would like to install Impostrip On-Demand and the Select Folder. Click on the Install button or press Return to proceed with this install option.
5. A dialogue box will appear stating that the installation has been successful.
6. Restart your computer.

5. New Features

Feature	Description
<p>New PS filter for Quark 7 files from Intel Macs</p>	<p>A new filter was developed to support files from Quark 7 created under OS X Universal and Intel Macs</p>
<p>Hot Folders. Landscape correction</p>	<p>Landscape Correction can be set when using Hot Folders, so that orientation pages will be changed according to Landscape Correction</p>
<p>Hot Folders New Centering option</p>	<p>There is a new Centering option for Hot Folders: “Honor Bottom Margin when possible”. If the option is OFF, OnDemand centers pages from in center of the Paper. When the option is ON, pages respect the bottom Margin (the gripper) used in the Template, that is, OnDemand images pages from the edge of the margin. Pages are centered horizontally. Now, this option does not work if Trim size of content documents are larger then the original bounding box in the Template.</p>
<p>Optimize PDF</p>	<p>Optional (purchased separately). Impostrip can now generate and accept optimized PDF as input. This option “cache” repeating information in the PDF file. For instance, when a picture is used in several pages, Impostrip can optimize so that only one copy is placed in the PDF file but used many. This reduces the size of the final PDF file. Good to use with variable data printing and Step and Repeat and any files where images are used more than once, including Optimized PDF from PageFlex and XMPie.</p>
<p>Support for PDF Rotate setting</p>	<p>When PDF pages are rotated, Acrobat and other applications only change the ‘/Rotation’ setting, not the page. Impostrip supports this value in order to position the pages in the imposition based on that Orientation transformation setting.</p>
<p>New Page Scale Calculator</p>	<p>Page Scale option has now a new addition. Traditionally, Page scale factor were entered as percentages. With this new calculator, it is now possible to define the <i>size</i> to use instead of a percentage value.</p> <p>For instance, an A4 page can be Scale to be resized as an A5. Be aware that this option <i>does not</i> constraint proportions.</p> <p>In the Scale Tool, there is a new icon on the lower left position of the Window. Clicking on it open the calculator settings:</p>

	 <p>The first parameters refer to the page size detected by Impostrip.</p> <p>The second entry defines the size of the scale values needed. Click OK applies the scale factor to the selected page (s).</p>
<p>Outline Trim in JDF mark layer</p>	<p>The Outline Trim Area mark can now be included in the PJTF and JDF marks layer when selected in Printer Setup.</p>
<p>PS Output File Extension</p>	<p>The PS extension is now automatically added to Postscript output. To prevent this extension from being added, it is possible to disable it by using the User Prolog.</p>

6. New/Updated Filters

In current version:

New/Updated Filters	
NEW	UPDATED
Quark 7 from Intel Macs	PDF Files InDesign

In 5.1:

New/Updated Filters	
NEW	UPDATED
Quark 7	Illustrator CS Windows EPS InDesign PDF files InDesign CS PageFlex Opus

In 4.4:

New/Updated Filters	
NEW	UPDATED
Acrobat 7 PS	Quark 6.5 In-Design CS Freehand MX Acrobat PS

From versions 4.1 & 4.3:

New/Updated Filters	
NEW	UPDATED
OPUS	DCS
Quark 6.5	Freehand 10 In-Design CS
CorelDraw 12.0	Illustrator CS Acrobat 6.0 (Postscript)

7. Bug Fixes

Incident Number	Fixes
5070. Mac OSX control file '.DS_Store' and processing of Hot Folder jobs	When Mac OSX control files "DS_Store" copied to OnDemand Hot Folder made processing to stop,. This is now fixed and the file is not considered to be part of the hot folder list of files
5110. PDF output improvements	Improvements on PDF output solves some issues with PDF files that include gradients, transparencies, colors, types, etc.
5128. Document File Name longer than 26 characters	Document Names in Doc List get truncated with a "#" sign when original name is longer than 26 characters. This causes files not found when using Windows Signature Server. It is now extended to the size used by the OS.
5146. Position offset did not move Slug Line	When applying offset values to move or position the Slug Line (Layout ID), those values did not have an effect. Fixed.
5181. Embedding Helvetica Font in PS output	Helvetica font used with Slug line information is now embedded in PS output.
5187. Signature Page Auto Center	When changing the Plate/Paper while adding a template, pages did not center in the Paper. It is now working
5201. PDF File Name with Special characters	When indexing PDF files with names using special characters, Imposstrip could not find the files. It is now fixed.
5214. Output Control and Image movement	When using Output Control with PS output, the Paper offset (movement) did not have any effect. It is now fixed.
5215. PS Output Orientation in Distiller	Some PS output files from Imposstrip showed the wrong orientation when creating a PDF using Acrobat Distiller. With RIPS were ok. It is now working.
5218. Indexing In-Design PS files created with selected range of pages	When a separated PS file from In-Design was created from a range of selected pages, Imposstrip could not recognize the colors properly. It is now fixed.
5219. Separated files and 'blanks' pages from In-Design CS	When blank pages were inserted in the In-Design Document, and a Separated PS was created, Imposstrip mixes the colors. It is now fixed.
5268. User Prolog and Registration Marks with pre-separated PDFs	A new addition to the user prolog: '%DoNotOutputColorRegistrationMarks' has been added. This entry avoids printing the Imposstrip Registration Marks when Separated PDF files are imposed. The user prolog is found in the Tools Folder and when needed, please copy it to the main folder where the OnDemand application is located.
5268. Japanese Job names corruption	Japanese Imposstrip only. Save jobs from Imposstrip get corrupted so Imposstrip could not open them anymore. It is now working.

8. Known Issues

This version of the software prints only to AppleTalk Printers. To add the printer (s) to use with On-Demand under OS X, the desired printer must be listed under AppleTalk Printers. The application prints to the AppleTalk printer that is the default for the system. A Preference option is now used to ignore default printer.

9. Hints.

This section is to serve as “refreshment” of some of the functionality in Impostrip OnDemand and also to explain how to make production easy when using the program.

If you have hints, tricks to share, please send it to techsupport@impostion.com and your hints will be included in the next read me file.

JDF Blank Pages against Reservations.

With JDF output, a blank page in the Document List can be *Blank*, which means that a blank page must be placed in the bounding box of the imposition, or it can be it a *Reservation*, which means that no page content is still defined but a JDF consumer (a Workflow System or a RIP for instance) will place the corresponding page (PDF, PS, 1-bit tiff, etc) in the Bounding box.

In Impostrip, when Adding Blank pages in the Document List, the option “Use as CIP4 JDF placeholder”:

- When selected means is a Reservation page
- When is not selected, means is a Blank page

Note: when there are no pages in the Document List, then the Preference option [*Output - Automatic JDF Placeholders for missing pages*] controls:

- When selected means Bounding boxes are Reservation pages
- When is not selected, means Blank pages must be placed in the bounding boxes.

Dynamic vs. Static Layout.

Impostrip uses the concept of Dynamic Layouts (Templates), where page and paper size can be changed in Job Setup using the same Template. This ability allows users to reduce the number of templates layouts to use.

Dynamic Paper

The Paper size defined in the Layout can be changed dynamically when creating the job by defining the size in Job Setup.

Dynamic Pages

The trim size of the page in the original Layout can be changed from job to job by setting the trim size in Job Setup, adapting the layout to every job

Customization of the Master Layout

When a change need to be done on the Layout for a given job, open the Master layout and apply the change. This will have an effect only in the Sheets for that job and the original Template is left intact. If a permanent change is required, edit the layout using the menu option “File – Edit Template”

10. How to Contact Ultimate

ULTIMATE` 300 Léo-Pariseau, Suite 2001 Montreal, Quebec CANADA H2X 4B3 Telephone: +1-514-938-9050 Fax: +1-514-938-5225	Technical Support: +1-514-938-4224 Email: techsupport@imposition.com Website: http://www.imposition.com Your <i>dongle number</i> can be displayed in the “About Impostrip On-Demand” Window
--	---

11. How To's Section

Impostrip On-Demand Preview

New to Impostrip On-Demand is the ability to generate a preview of the Imposition. The preview generated is a PDF file that opens with the OS X system application known as **Preview**.

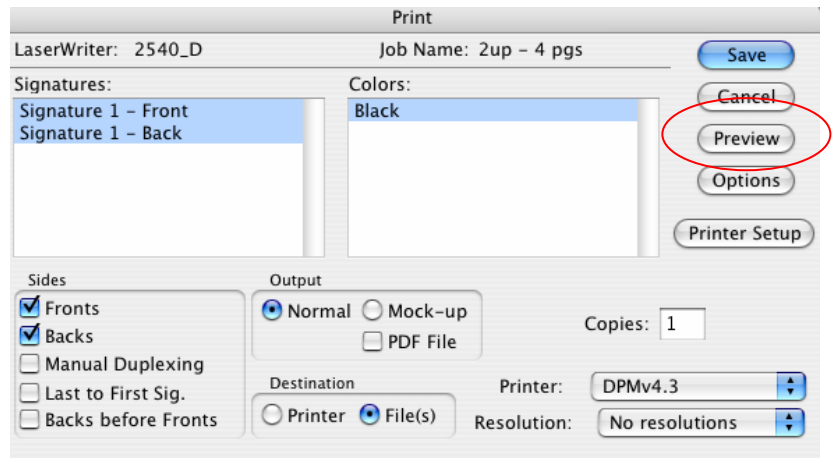
Marks are viewable in the preview. Make sure that they are selected under the Marks option of the Master Layout

Procedure.

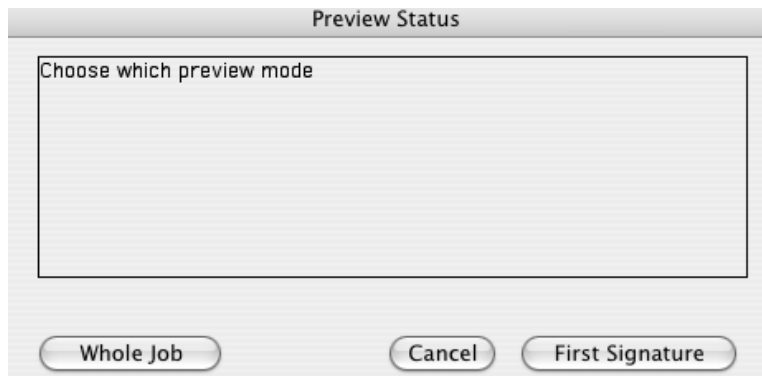
1. Under **Print** option

The Preview option is found under the Print Dialog Box.

Click on **Preview**. There is no need to configure output folders or anything else. .



2. Select Signature to Preview



Select the Preview to use:

First Signature

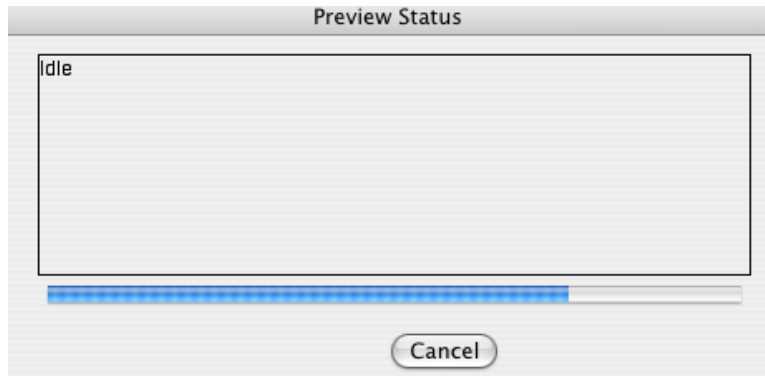
It will preview only the First Signature. Fastest.

Whole Job

It will Preview all Signatures in the Job. It may take longer than First Signature Option

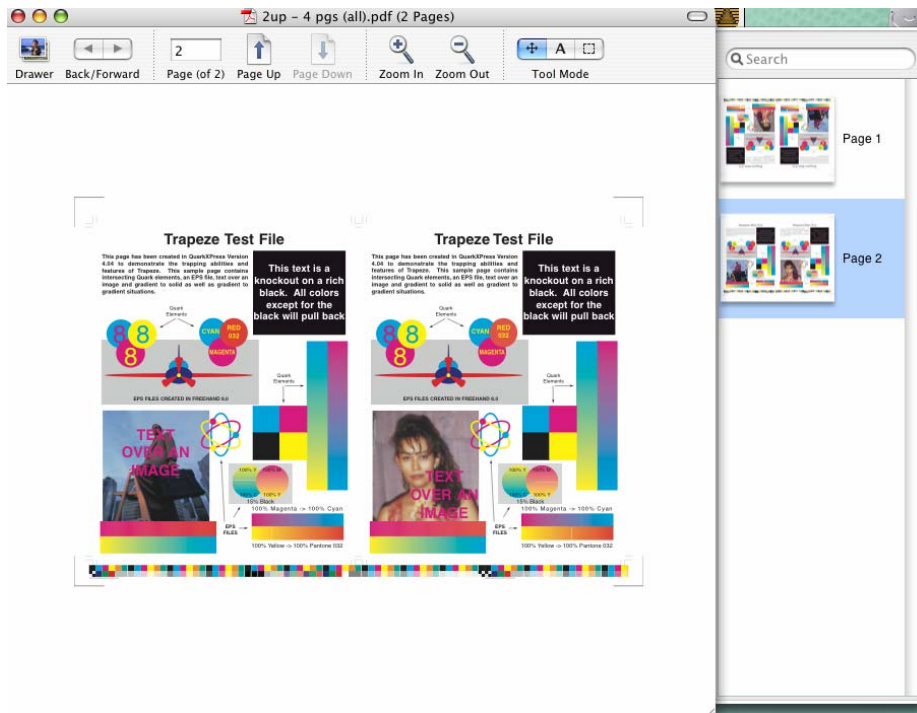
3. Preview Status.

The Preview Status appears, showing the progress of the Preview Generation.



4. Viewing the Preview

When the Preview is generated, it is automatically opened with the application Preview. Each Side (Front & Back) of the Signature appears as a Page. If your Job contains many Signatures, it is recommended to use **Layout ID** Option, under the **Print Options**, to identify each Signature with its proper side.



Note:

To print to the actual output device, it is necessary to go back to the Print Dialog and print the normal way. The preview cannot be used as an output file to be sent to a device.

Using Custom Marks.

Impostrip On-Demand has the ability of add custom marks. Marks like custom Color Bars or any other mark needed to be tag to a Paper Anchor Point.

Requirements

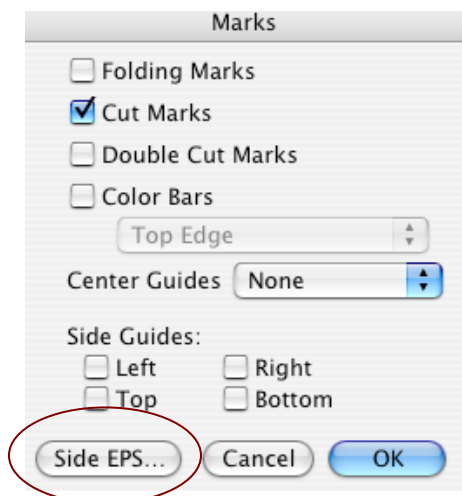
- a. Accepted format for custom marks: EPS and PDF
- b. For PDF output, custom marks applied must be in PDF format.

Mark Access

1. Make sure Impostrip On-Demand is not running so that the program will load the mark when launched.
2. Copy the custom mark into the “EPS Side Marks” folder of Impostrip On-Demand folder.
3. Launch Impostrip On-Demand.

Applying the mark

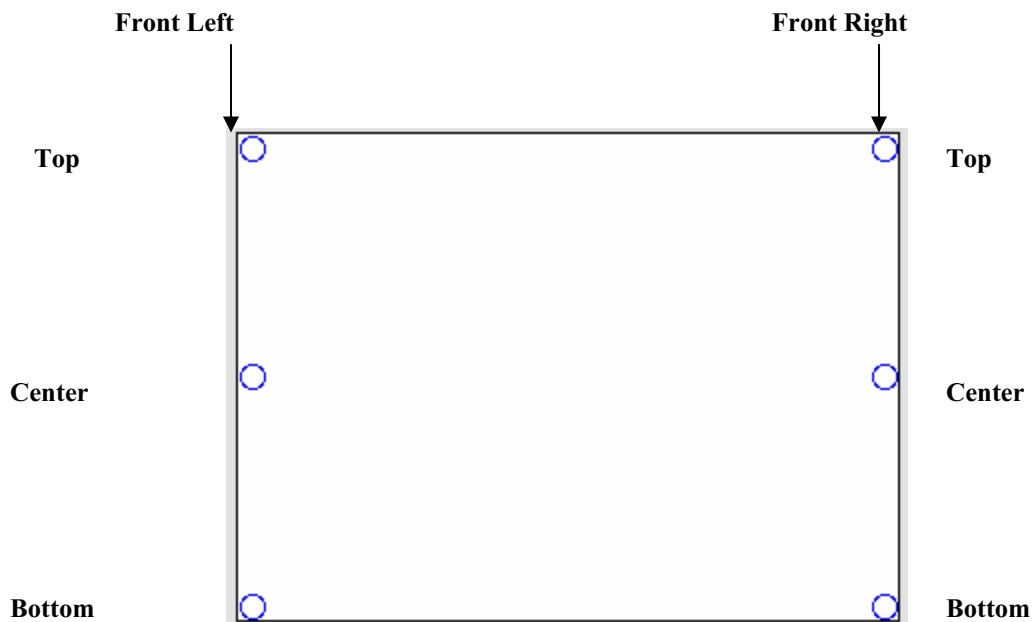
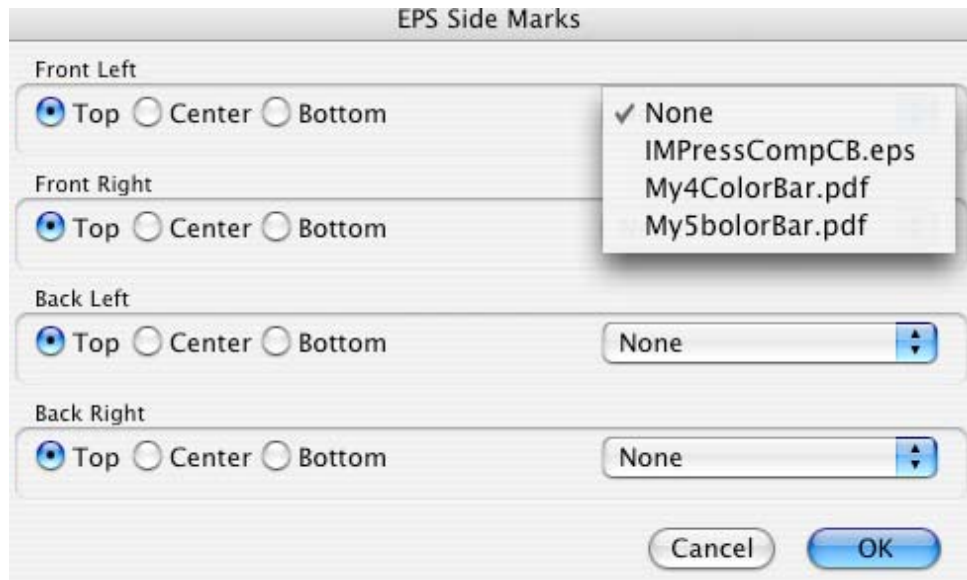
- Open your layout (the Master Layout or any custom made Impostrip On-Demand Layout).
- Click on Marks



- Click on the “EPS Side Marks” option.
- Select the mark you want to use from the Marks Drop-down list. Do that for the Front and Back layout if applicable.
- Select the Anchor Point where the mark should be tagged.

Note:

In Impostrip On-Demand, the Front and the Back of a layout are independent from one another. To add a mark to both sides, it is necessary to select the mark to use for the Front side and for the Back side separately.



Notes:

- Front refers to the Front side of a Signature.
- Back refers to the Back side of a Signature (in a double sided layout).
- The anchor points refer to the area of the Impostrip On-Demand Layout where the custom mark should be applied.
- Top: refers to the top of the layout
- Center: refers to the middle area of the layout, from top to bottom
- Bottom: refers to the bottom of the layout.