

# ULTIMATE Technographics, Inc. Impostrip On-Demand version 5.1

*Please print and read this document before installing your software.*

Important information has been included in this document concerning your copy of Impostrip On-Demand software. This ReadMe file contains the installation instructions and important information for Impostrip On-Demand version 5.1

---

## Contents

1. Welcome to Impostrip On-Demand v5.1
  2. Before you install Impostrip On-Demand
  3. System Requirements
  4. Installation
  5. New Features
  6. New/Updated Filters
  7. Bug Fixes
  8. Known Issues
  9. Hints
  10. How to Contact Ultimate
  11. How To's Section
- 

## 1. Welcome to Impostrip On-Demand 5.1

Impostrip On-demand, the best imposition solution for Print-On-demand and small printers. We have put extensive research and development into this version of the product. Your suggestions and comments are always welcome. Our development team will take all suggestions into consideration.

*Starting with Mac version 5.1, Impostrip On-Demand has been split in two versions: On-Demand Digital and On-Demand Offset, in order to serve better 2 niches of the low-end imposition market. On-Demand Digital contains all the options available in the Offset version plus options that pertain to the On-Demand Digital printing environments. The Offset version is aimed at the offset printing market and new developments will be done to this version to make the product more responsive to the needs of that part of the industry. Users of previous versions of On-Demand are entitled to get the Digital if desired, since that version is the Offset version plus more options for Digital printing, both at the same time. Contact your sales representative for more information.*

---

## 2. Before you install Impostrip On-Demand

To ensure a successful installation of your new Impostrip On-Demand software, please follow the procedures described below. Please note that the application requirements mentioned below do not include RAM needed by the operating system or by other applications, which may be used at the same time as Impostrip On-Demand.

### 3. System Requirements

System Requirements	
Minimum	Recommended
<b>Processor:</b> Macintosh G4	<b>Processor:</b> Macintosh G5
<b>RAM:</b> 128Mb	<b>RAM:</b> 1 Gb
<b>Hard disk:</b> 40 Gb	<b>Hard disk:</b> 80 Gb
<b>Operating System:</b> 10.3 or higher.	<b>Operating System:</b> Mac OS X v 10.4.2
<b>Supporting Software:</b> Adobe Acrobat 6 for PDF support	<b>Supporting Software:</b> Adobe Acrobat 7 Professional for PDF support

See Documentation "How to configure Acrobat" with Imposstrip On-demand.

Notes:

- For the processing of PDF files, Adobe Acrobat 6 or 7 must be installed, Acrobat Reader is **not** enough.
- This version of the software works with OS 10.3 (Panther) or higher and/or 10.4 (Tiger).

---

### 4. Installation

If you are installing a demo version of Imposstrip On-Demand you don't need the security device, commonly called a Passport or dongle. Imposstrip On-Demand demo will work for 5 days once first installed and launched.

#### Imposstrip On-Demand for OS X Installation – Part 1

*Skip to Part 2 if you are installing a demo version of Imposstrip On-Demand.*

Your computer must be completely shut down when attaching the dongle to the USB port. Once attached, restart your computer.

#### Imposstrip On-Demand Installation – Part 2:

1. Insert the Imposstrip CD-ROM disk in the appropriate drive.
2. Double click on the Imposstrip On-Demand CD-ROM icon.
3. Double-click on the Imposstrip On-Demand Installer Application.
4. The default setting for the installer will install Imposstrip On-demand and all supported files. In the Install Location dropdown box, please specify where you would like to install Imposstrip On-Demand and the Select Folder. Click on the Install button or press Return to proceed with this install option.
5. A dialogue box will appear stating that the installation has been successful.
6. Restart your computer.

## 5. New Features

### 2 versions: Offset and Digital

Starting with version 5.0, Imposrip On-Demand has been split in two versions: On-Demand **Digital** and On-Demand **Offset**, Both products have the same imposition core with some differences in some features. The Digital version contains all the features available in the Offset version plus more options for Digital printing.

Features of Digital not available in the Offset version

Dynamic Imposition	Ability to reuse an imposition layout regardless of the page sizes of a given job
Repeating Booklets Collating Method	Mix of Saddle Stitch with Perfect Bound collating method. Also known as Nested Saddle Stitch.
Signature Group Printing	Designed to work with variable data files.
JDF Output	Ability to Output JDF files, Populated or Non-Populated
HP.IMP	Ability to Export Layouts in the HP-Indigo .IMP format.

### Dynamic Imposition with Dynamic Templates (Digital version only)

This feature works in manual mode and with Automation. It consists of using the same Layout or Template with all jobs regardless of the trim size of their pages. On Demand adjust automatically the detected page sizes and adjust the page size of pages in the Template

This feature reduces the number of template needed for imposition For instance, a 2-up A4 size template can be use to impose 2-up letter size or A5.

This feature is very useful when using Automation with Hot Folders.

**Note:** if pages exceed the paper border, the program will not impose and an error message will be indicated. The algorithm detects the Trim Size of the first page/file in the Hot folder and use it as the trim size for the imposition.

Option available when configuring hot folders under

**[Job Setup –Dynamic Layout in Hot Folders]**

### Support for Quark 7 PS files

On-Demand 5.1 imposes files from Quark 7 and previous versions.

### New Option: New Template from the File Menu

A new option to create a custom Layout is accessible from the File menu option. This option does not require creating a job prior to the template.

Templates must be saved in the “On-Demand Best fit Templates” folder to be able to use them with imposition jobs.

## Hot Folder Controller

Available in both versions, management of Hot Folder is now easier. A new and improved Hot Folder Controller Window helps managing the configuration of On-Demand Automation

## Signature (Sheet) Group Printing (Digital version only)

Option available *only* with the Digital version

This option gives the ability to print groups of Signatures at a given moment for one job. When printing, a job can be sent to the printer by groups of signatures.

For instance, a 50 Signature job can be sent by groups of 10 Signatures each, so the RIP can start processing the first 10 Signatures while On-Demand prepares the next 10 Signatures, repeating this cycle until the whole job is sent.

This option is useful when printing large impositions, like when imposing variable data files.

Available under **[Job Setup –Output Groups of xxx Sheets]**, where **xxx** is the number of Signatures of each group must defined.

Note: the last group may contain fewer Signatures than all the other groups, depending on the number of Signatures defined and the number of Signatures in the job.

## Side Guide Mark

Available in both versions, a Side Guide mark can now be added to the Imposition. The mark can be printed on the left, right, top and-or bottom. Available when editing a Layout under **[Marks]**.

## JDF Output (Digital version only)

Impostrip On-Demand Digital outputs the CIP4 JDF format (Job Definition Format). JDF can be populated, non populated or MIME JDF. See the [Preferences] Window to change options. Available under the **[Print]** option.

## HP.IMP output format (Digital version only)

Impostrip On-Demand Digital offers the ability to export templates in the HP-Indigo .imp proprietary format, to be used with the HP-Production Flow variable data printing system. To use this feature, a Layout must be defined in the Job Setup Windows. Option available under **[Job Setup – HP.IMP]**

## Ability to load only a selection of PPDs.

From Impostrip Printers List (PPDs) is now possible to load only the user selected Printer so program loads faster and avoid loading unnecessary printer drivers.

## Option to “Ignore System Printer”.

By default, the [Print] option will look for the default printer of the system to establish communication. This option avoids looking for the Printer. Good when printing to file or when default printer is not available

## **Automatic PDF Bleed Control**

Impostrip automatically detects the trim and the bleed area of PDF files. Use ***[Job Option – Automatic PDF Bleed Control]***

## **Automatic save of preferences file.**

The preference file is now saved immediately after every change. Impostrip used to follow the Apple convention for preferences behavior, which is to save the file only after quitting the application.

## **Automatic Page Centering with Page Scale**

When applying page scale to a page, Impostrip will automatically center the page using the appropriate centering method for the type of file imposed.

## **Ability to “void” pages in a Cut & Stack Imposition**

When imposing a Cut & Stack job, it is possible to use only a section of pages in the Layout. To avoid using some pages, open the master Layout and enter number *zero* to the page(s) that should not be included in the printout. All Signatures will not use the page in that position. The same logic can be applied to a Custom Layout. For instance, in a 4-up layout, voiding one page will make a 3-up imposition.

## **Numbering Cut&Stack layouts in any direction**

It is now possible to create Cut&Stack layouts with a numbering sequence in any direction, either horizontally or vertically.

## 6. New/Updated Filters

In current version:

New/Updated Filters	
NEW	UPDATED
Quark 7	Illustrator CS Windows EPS
	InDesign PDF files
	InDesign CS
	PageFlex
	Opus

In 4.4:

New/Updated Filters	
NEW	UPDATED
Acrobat 7 PS	Quark 6.5
	In-Design CS
	Freehand MX
	Acrobat PS

From versions 4.1 & 4.3:

New/Updated Filters	
NEW	UPDATED
OPUS	DCS
Quark 6.5	Freehand 10
	In-Design CS
CorelDraw 12.0	Illustrator CS
	Acrobat 6.0 (Postscript)

## 7. Bug Fixes

### **Log # 5099. Hot Folders and Cut and Stack error**

Configuring Hot Folders using Cut and Stack collating method could cause the error: "fnfErr: File not found in function: FSMakeFSSpec in GetOneSig". This is now fixed."

### **Log # 4969. InDesign CS2 files not auto-centering**

InDesign CS2 files gets centered automatically now in Imposstrip

### **Log # 4958. System file ".DS Store" causing indexing errors**

.DS\_Store system files in a folder with documents caused indexing problems. With hot folders, this caused the job to fail processing. This is now fixed. OnDemand ignores those files.

### **Log # 4948. Wrong color information in Slug Line**

When imposing 5 or more colors PDF and printing Postscript output, the Slugline references every layer as black. This is fixed.

### **Log # 4941. PageFlex pages not centering**

Pages from PageFlex are *now* centering properly.

### **Log # 4921. Mac Desktop navigation failed to show single files**

Navigating the desktop from Imposstrip showed only active volumes, not files. This is now working properly.

### **Log # 4919. PDF files from InDesign not processing properly**

Some PDF files created from InDesign did not process properly when printing from One-Demand. Some solid and tints colors printed as black. This is now corrected.

### **Log # 4917. InDesign PS separation colors get mixed at the Output**

With separated InDesign files, some colors got mixed up with other colors, producing wrong output. This has been corrected.

### **Log # 4894. PDF output and long job names**

With PDF output, a job longer then 23 characters caused improper output. It is now fixed.

### **Log # 4753. PDF output issue**

With some PDF files and printing PDF output from OnDemand, Acrobat generated the following error: "There was a RAISE without a handler. The application will now exit". This is now fixed.

## 8. Known Issues

This version of the software prints only to AppleTalk Printers. To add the printer (s) to use with On-Demand under OS X, the desired printer must be listed under AppleTalk Printers. The application prints to the AppleTalk printer that is the default for the system. A Preference option is now used to ignore default printer.

---

## 9. Hints.

This section is to serve as “refreshment” of some of the functionality in Imposstrip OnDemand and also to explain how to make production easy when using the program.

If you have hints, tricks to share, please send it to [techsupport@impostion.com](mailto:techsupport@impostion.com) and your hints will be included in the next read me file.

### JDF Blank Pages against Reservations.

With JDF output, a blank page in the Document List can be *Blank*, which means that a blank page must be placed in the bounding box of the imposition, or it can be it a *Reservation*, which means that no page content is still defined but a JDF consumer (a Workflow System or a RIP for instance) will place the corresponding page (PDF, PS, 1-bit tiff, etc) in the Bounding box.

In Imposstrip, when Adding Blank pages in the Document List, the option “Use as CIP4 JDF placeholder”:

- When selected means is a Reservation page
- When is not selected, means is a Blank page

Note: when there are no pages in the Document List, then the Preference option [*Output - Automatic JDF Placeholders for missing pages*] controls:

- When selected means Bounding boxes are Reservation pages
- When is not selected, means Blank pages must be placed in the bounding boxes.

### Dynamic vs. Static Layout.

Imposstrip uses the concept of Dynamic Layouts (Templates), where page and paper size can be changed in Job Setup using the same Template. This ability allows users to reduce the number of templates layouts to use.

#### Dynamic Paper

The Paper size defined in the Layout can be changed dynamically when creating the job by defining the size in Job Setup.

#### Dynamic Pages

The trim size of the page in the original Layout can be changed from job to job by setting the trim size in Job Setup, adapting the layout to every job

### **Customization of the Master Layout**

When a change need to be done on the Layout for a given job, open the Master layout and apply the change. This will have an effect only in the Sheets for that job and the original Template is left intact. If a permanent change is required, edit the layout using the menu option “File – Edit Template”

## **10. How to Contact Ultimate**

<b>ULTIMATE</b> `	Technical Support: +1-514-938-4224
300 Léo-Pariseau, Suite 2001	Email: <a href="mailto:techsupport@imposition.com">techsupport@imposition.com</a>
Montreal, Quebec	Website: <a href="http://www.imposition.com">http://www.imposition.com</a>
CANADA H2X 4B3 Telephone:	
+1-514-938-9050	Your <i>dongle number</i> can be
Fax: +1-514-938-5225	displayed in the “About Impostrip
	On-Demand” Window

## 11. How To's Section

### Impostrip On-Demand Preview

New to Impostrip On-Demand is the ability to generate a preview of the Imposition. The preview generated is a PDF file that opens with the OS X system application known as **Preview**.

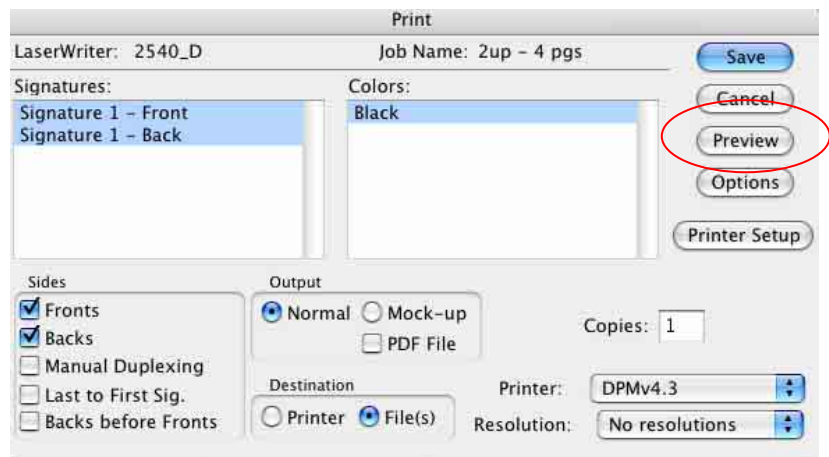
Marks are viewable in the preview. Make sure that they are selected under the Marks option of the Master Layout

#### Procedure.

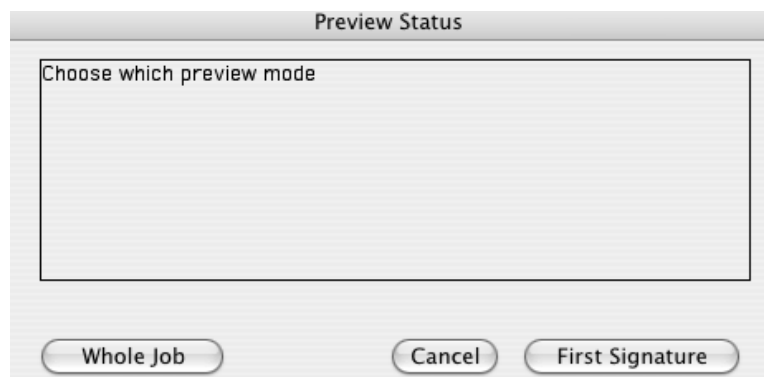
##### 1. Under **Print** option

The Preview option is found under the Print Dialog Box.

Click on **Preview**. There is no need to configure output folders or anything else. .



##### 2. Select Signature to Preview



Select the Preview to use:

#### First Signature

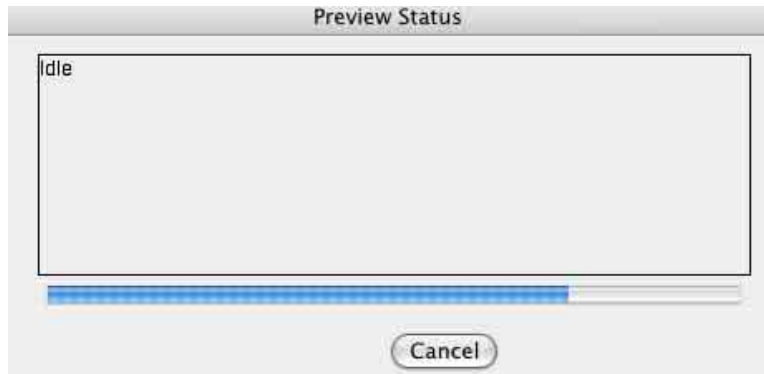
It will preview only the First Signature. Fastest.

#### Whole Job

It will Preview all Signatures in the Job. It may take longer than First Signature Option

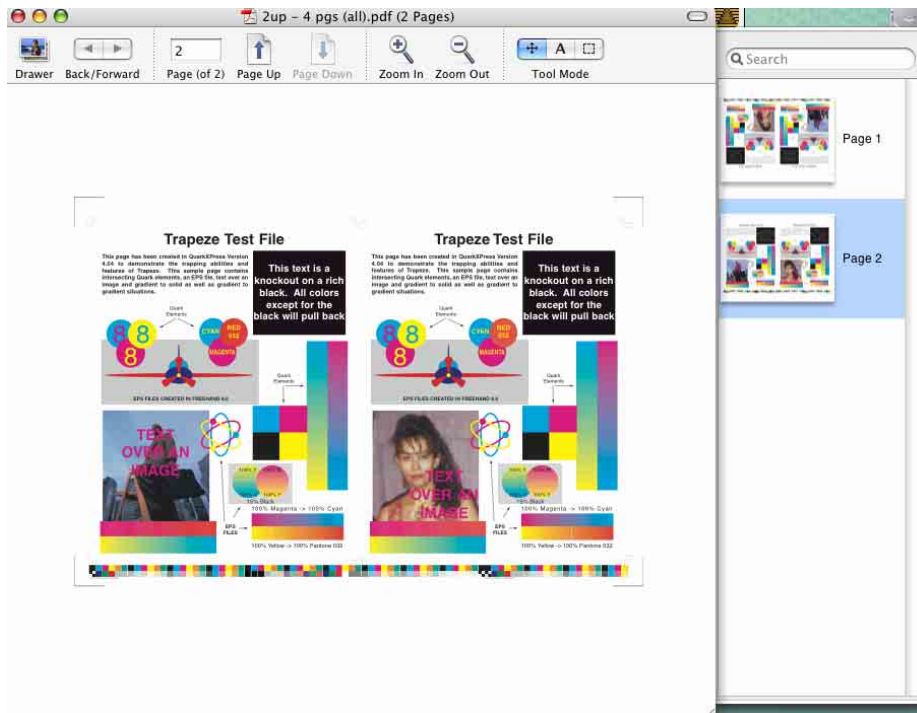
### 3. Preview Status.

The Preview Status appears, showing the progress of the Preview Generation.



### 4. Viewing the Preview

When the Preview is generated, it is automatically opened with the application Preview. Each Side (Front & Back) of the Signature appears as a Page. If your Job contains many Signatures, it is recommended to use **Layout ID** Option, under the **Print Options**, to identify each Signature with its proper side.



Note:

To print to the actual output device, it is necessary to go back to the Print Dialog and print the normal way. The preview cannot be used as an output file to be sent to a device.

---

## Using Custom Marks.

---

Impostrip On-Demand has the ability of add custom marks. Marks like custom Color Bars or any other mark needed to be tag to a Paper Anchor Point.

---

### Requirements

---

- a. Accepted format for custom marks: EPS and PDF
- b. For PDF output, custom marks applied must be in PDF format.

---

### Mark Access

---

1. Make sure Impostrip On-Demand is not running so that the program will load the mark when launched.
2. Copy the custom mark into the “EPS Side Marks” folder of Impostrip On-Demand folder.
3. Launch Impostrip On-Demand.

---

### Applying the mark

---

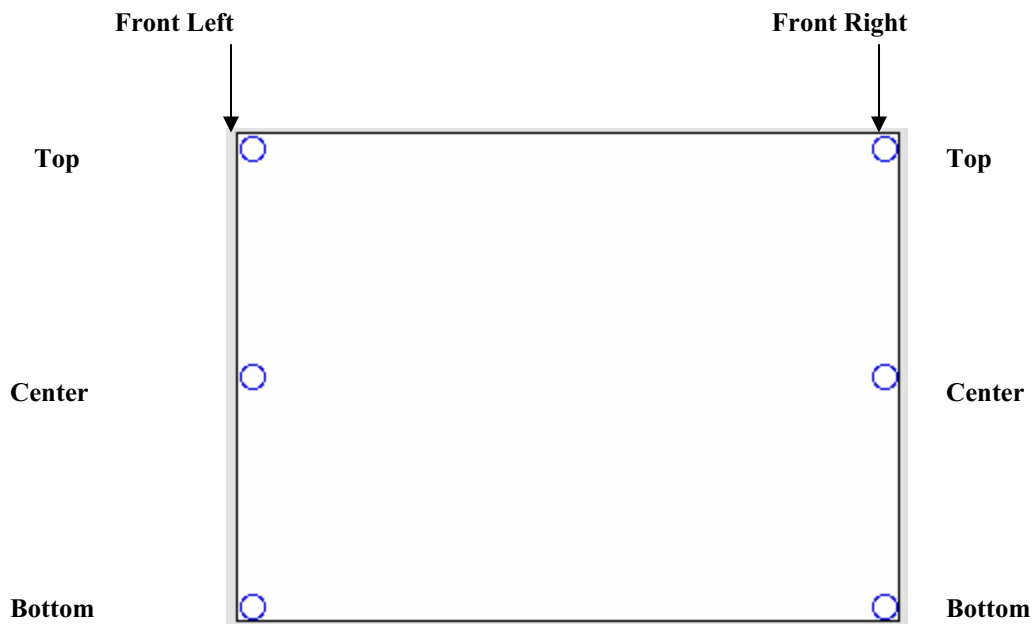
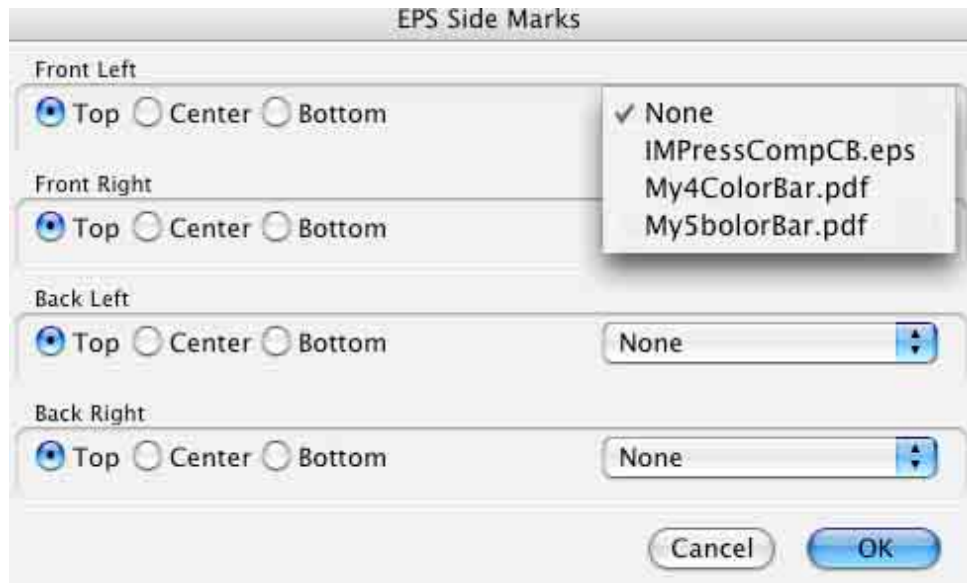
- Open your layout (the Master Layout or any custom made Impostrip On-Demand Layout).
- Click on Marks



- Click on the “EPS Side Marks” option.
- Select the mark you want to use from the Marks Drop-down list. Do that for the Front and Back layout if applicable.
- Select the Anchor Point where the mark should be tagged.

Note:

In Impostrip On-Demand, the Front and the Back of a layout are independent from one another. To add a mark to both sides, it is necessary to select the mark to use for the Front side and for the Back side separately.



**Notes:**

- Front refers to the Front side of a Signature.
- Back refers to the Back side of a Signature (in a double sided layout).
- The anchor points refer to the area of the Impostrip On-Demand Layout where the custom mark should be applied.
- Top: refers to the top of the layout
- Center: refers to the middle area of the layout, from top to bottom
- Bottom: refers to the bottom of the layout.