

# ULTIMATE Technographics, Inc. Impostrip On-Demand version 4.4

*Please print and read this document before installing your software.*

Important information has been included in this document concerning your copy of Impostrip On-Demand software. This ReadMe file contains the installation instructions and important information for Impostrip On-Demand version 4.4

---

## Contents

1. Welcome to Impostrip On-Demand v4.4
  2. Before you install Impostrip On-Demand
  3. System Requirements
  4. Installation
  5. New Features
  6. New/Updated Filters
  7. Bug Fixes
  8. Known Issues
  9. How to Contact Ultimate
  10. How To's Section
- 

## 1. Welcome to Impostrip On-Demand 4.4

Impostrip On-demand, the best imposition solution for Print-On-demand and small printers. We have put extensive research and development into this version of the product. Your suggestions and comments are always welcome. Our development team will take all suggestions into consideration.

---

## 2. Before you install Impostrip On-Demand

To ensure a successful installation of your new Impostrip On-Demand software, please follow the procedures described below. Please note that the application requirements mentioned below do not include RAM needed by the operating system or by other applications, which may be used at the same time as Impostrip On-Demand.

### 3. System Requirements

System Requirements	
Minimum	Recommended
<b>Processor:</b> Macintosh G4	<b>Processor:</b> Macintosh G5
<b>RAM:</b> 128Mb	<b>RAM:</b> 512 Mb
<b>Hard disk:</b> 40 Gb	<b>Hard disk:</b> 80 Gb
<b>Operating System:</b> 10.3 or higher.	<b>Operating System:</b> Mac OS X v 10.4.2 "Tiger"
<b>Supporting Software:</b> Adobe Acrobat 6 for PDF support	<b>Supporting Software:</b> Adobe Acrobat 7 Professional for PDF support

See Documentation "How to configure Acrobat" with Impostrip On-demand.

Note: For the processing of PDF files, Adobe Acrobat 6 or 7 must be installed, Acrobat Reader is **not** enough.

- This version of the software works with OS 10.3 (Panther) or higher and/or 10.4 (Tiger).

---

### 4. Installation

If you are installing a demo version of Impostrip On-demand you don't need the security device, commonly called a Passport or dongle. Impostrip On-demand demo will work for 5 days once first installed and launched.

#### Impostrip On-Demand for OS X Installation – Part 1

*Skip to Part 2 if you are installing a demo version of Impostrip On-demand.*

Your computer must be completely shut down when attaching the dongle to the USB port. Once attached, restart your computer.

#### Impostrip On-Demand Installation – Part 2:

1. Insert the Impostrip CD-ROM disk in the appropriate drive.
2. Double click on the Impostrip On-Demand CD-ROM icon.
3. Double-click on the Impostrip On-Demand Installer Application.
4. The default setting for the installer will install Impostrip On-demand and all supported files. In the Install Location dropdown box, please specify where you would like to install Impostrip On-Demand and the Select Folder. Click on the Install button or press Return to proceed with this install option.
5. A dialogue box will appear stating that the installation has been successful.
6. Restart your computer.

## 5. New Features

### Support for Acrobat 7

Impostrip supports native imposition of PDF files using Acrobat 7. When installing, Impostrip will determine the presence of whether Acrobat 7 or 6 and will add the appropriate plug-in. Impostrip understands files created with versions 7, 6, 5, 4, and 3 but it can use Acrobat applications version 7, 6 (both Windows and Mac) and 5 (Mac only).

### Support for OS 10.4 (Tiger)

Impostrip can now take advantage of the over 200 new features in the Tiger version of Mac OS X. It also works under Panther (10.3.x)

### New Registration Marks (Center Guides).

New to this version is the ability to add a registration mark to the template. Available when editing a Layout under the Marks option. Registration Marks can be placed as Horizontal (Top and Bottom), Vertical (Left and Right) or both.

---

## 6. New/Updated Filters

New/Updated Filters	
NEW	UPDATED
Acrobat 7 PS	Quark 6.5
	In-Design CS
	Freehand MX
	Acrobat PS

From versions 4.1 & 4.3:

New/Updated Filters	
NEW	UPDATED
OPUS	DCS
Quark 6.5	Freehand 10
	In-Design CS
CorelDraw 12.0	Illustrator CS
	Acrobat 6.0 (Postscript)

## 7. Bug Fixes

### Log #: 4809. InDesign CS 3.0.1 page centering

. Pages from In-Design CS 3.0.1 are now centering properly.

### Log # 4811. QuarkXpress 6.5 fonts

Fonts in files created by Quark 6.5 are now fully recognized.

### Log # 4817. Auto-recognition of FreeHand MX PS files.

Impostrip On-Demand automatically recognizes files from FreeHand MX.

---

## 8. Known Issues

This version of the software prints only to AppleTalk Printers. To add the printer (s) to use with On-Demand under OS X, the desired printer must be listed under AppleTalk Printers. The application prints to the AppleTalk printer that is the default for the system.

---

## 9. How to Contact Ultimate

**ULTIMATE** `   
300 Léo-Pariseau, Suite 2001  
Montreal, Quebec  
CANADA H2X 4B3 Telephone:  
+1-514-938-9050  
Fax: +1-514-938-5225

Technical Support: +1-514-938-4224  
Email: [techsupport@imposition.com](mailto:techsupport@imposition.com)  
Website: <http://www.imposition.com>

## 10. How To's Section

### Impostrip On-Demand Preview

New to Impostrip On-Demand is the ability to generate a preview of the Imposition. The preview generated is a PDF file that opens with the OS X system application known as **Preview**.

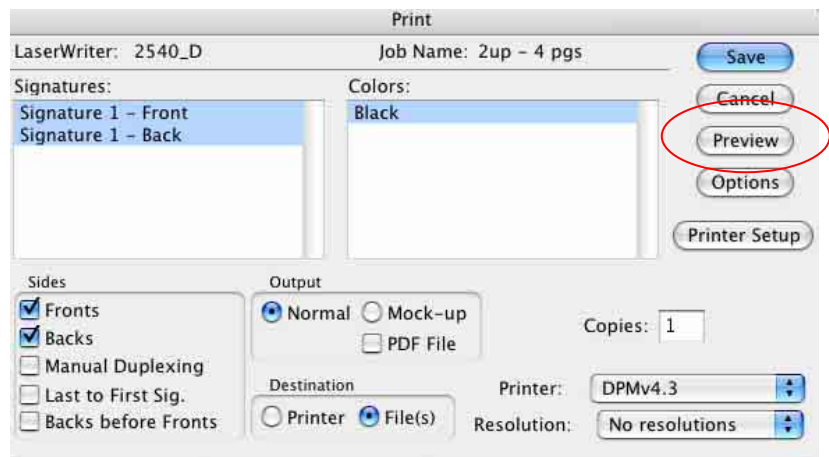
Marks are viewable in the preview. Make sure that they are selected under the Marks option of the Master Layout

#### Procedure.

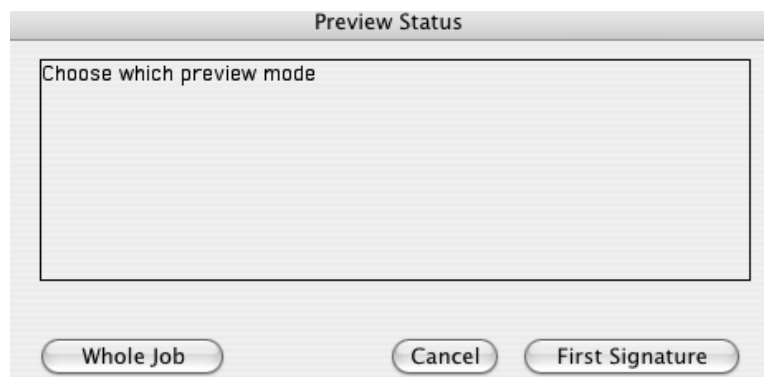
##### 1. Under **Print** option

The Preview option is found under the Print Dialog Box.

Click on **Preview**. There is no need to configure output folders or anything else. .



##### 2. Select Signature to Preview



Select the Preview to use:

#### First Signature

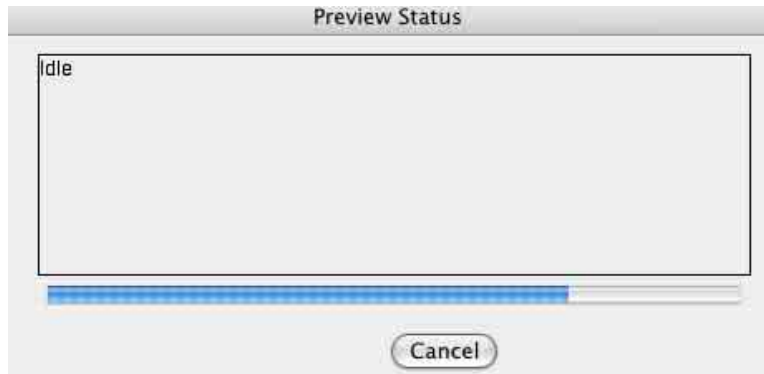
It will preview only the First Signature. Fastest.

#### Whole Job

It will Preview all Signatures in the Job. It may take longer than First Signature Option

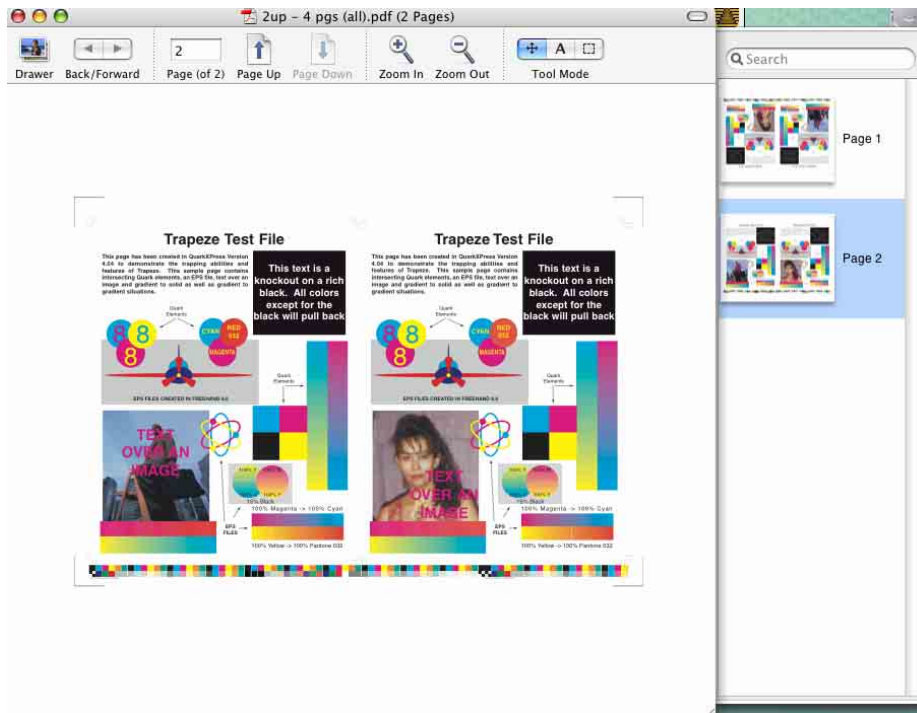
### 3. Preview Status.

The Preview Status appears, showing the progress of the Preview Generation.



### 4. Viewing the Preview

When the Preview is generated, it is automatically opened with the application Preview. Each Side (Front & Back) of the Signature appears as a Page. If your Job contains many Signatures, it is recommended to use **Layout ID** Option, under the **Print Options**, to identify each Signature with its proper side.



Note:

To print to the actual output device, it is necessary to go back to the Print Dialog and print the normal way. The preview cannot be used as an output file to be sent to a device.