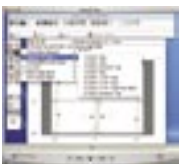


Platform	Speed	Ram	OS
Macintosh	G4 +	256Mb +	OS X 10.3 +
Windows	Pentium 4 +	256Mb +	2000 Pro, XP +

Client-server imposition with Advanced Hot Folder automation and dynamic templates

### QuickFACTS

- Compatible with OS X 10.4 (Tiger) and Acrobat 7
- Runs Universal (Intel) natively
- PS, PDF, JDF, PJTF & ICF to interface with : Rampage ROOM and NORM workflows, Creo Brisque & Prinergy, AGFA Apogee and ApogeeX, Xitron Xenith and Xiflow, FujiFilm Celebrant, EFI One Flow, ArtWork Systems Nexus & Odystar, Polkadots Prepage IT, Smart Move by Omnitek...
- Full imposed PS, EPS and PDF signature preview
- Unlimited user client-server workflow (except Solo which is limited to one client)
- PDF workflow support including Acrobat 7, PDF-in, PDF-out, without converting the PDF files to PS
- Ganging: Mix independent page sizes on same press sheet
- Imports Preps® templates
- Origami virtual paper folding for easy template making
- Unlimited output size and tiling support for CTF
- Input: PDF, PS, EPS, TIFF
- Output: PS, PDF, JDF, PJTF, Apogee templates, ICF and CIP3 PPF for preview, cutting, folding (not available in Solo)
- Automated hot folder with dynamic templates
- Web growth support, bottling and shingling
- Display impositions for up to 6 Webs on screen
- Mix saddle-stitch and perfect-bound in same job.
- Group signatures sharing same colors (Sectionning) (not available in Solo)
- Interactive Webex customized demo available



With our free QuickStart video you'll be imposing files in a snap!

## KeyBENEFITS

### Client-Server Imposition Workflow

- Impostrip offers unlimited clients (Impostrip Solo is limited to one client)
- CSRs can create basic templates and submit templates to prepress to complete the final template
- Estimator can simulate the printing job to better evaluate jobs
- Bindery can create full mock-ups and submit templates to prepress.
- Cross-platform client and server
- Workstations are freed immediately to perform other tasks
- Minimized network activity
- More plates per hour

### Automated Imposition Workflow

Unique hot folder automation fully automates the imposition process from input to output by simply dragging the source files to the hot folder.

- Minimize human errors
- Allows inexperienced employees to output imposed jobs for proofing or final output without using the client application
- A basic template is used in hot folder automation there is no need to create a complete job, Impostrip will build and repaginate the imposition based on the number of pages in the source files
- Output files are named as the source files to overcome overwriting
- Unlimited Hot Folders can be created on the network

### Post-Rip and JDF Workflow Benefits

- Impostrip Server can be installed on the file or rip server to minimize network traffic
- Single low resolution files can be automated with Hot Folder Automation
- Hot Folder automation can also be used to automatically generate complete JDF imposition by populating the hot folder template. Other solutions must provide the complete imposition every time a JDF is submitted to the workflow. Supports populated and unpopulated JDF.

### Dynamic Templates

Impostrip templates can be reformatted automatically without having to create new templates manually. Press sheet sizes and page sizes can be reformatted automatically along with the press marks. Extremely useful for shops that has digital or a mixed of offset/digital environments.

- Faster creation of similar templates
- Less human errors
- Minimize the amount of templates and hot folders required in your shop
- Dynamic marks: press marks automatically fit new templates

### Easy web or sheetfed press template making with Origami

Use Origami to create new imposition templates. Origami is a virtual paper folding tool built-into Impostrip. Origami allows you to fold your press sheet on screen, automatically generates pages in the proper imposed order and orientation with cut and fold marks in place - once complete, add your own crop marks, and color bars to your templates. Origami simulates the web press on-line finishing.

- Fold paper upward or downward to simulate the actual folding pattern
- Cut the paper to simulate step-and-repeat or multiple ups jobs
- Cut the paper to enable the sectioning feature (group different signatures on the same press sheet to group common colors)
- Move and place different webs to enable multiple sections
- Cut the paper to create slit webs (full, half, 3/4, 1/2 or 1/4 web)
- Combine webs

### Built-in Color Bar Editor

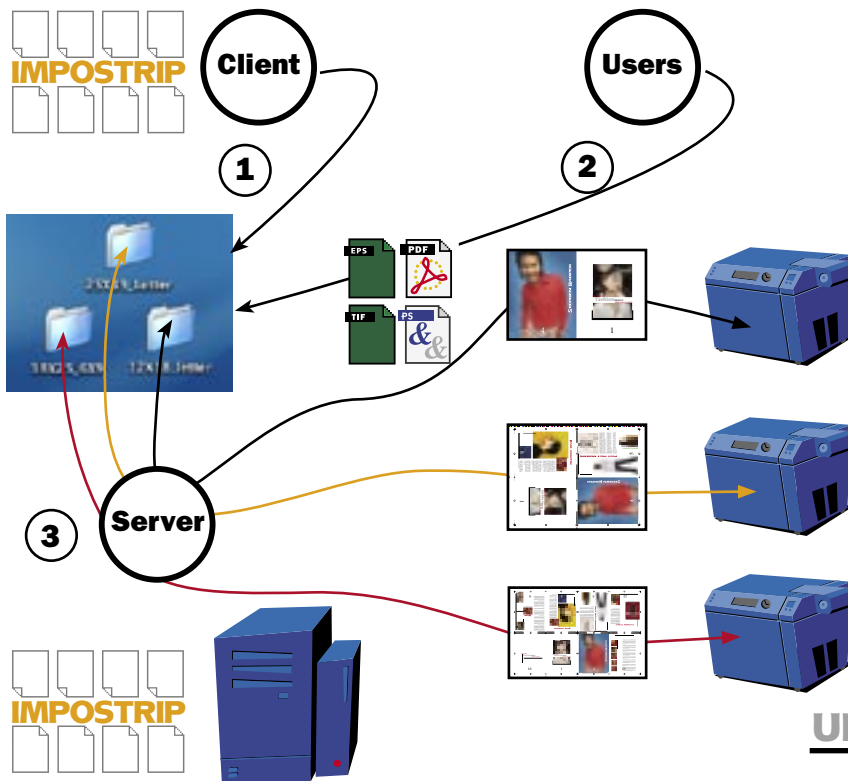
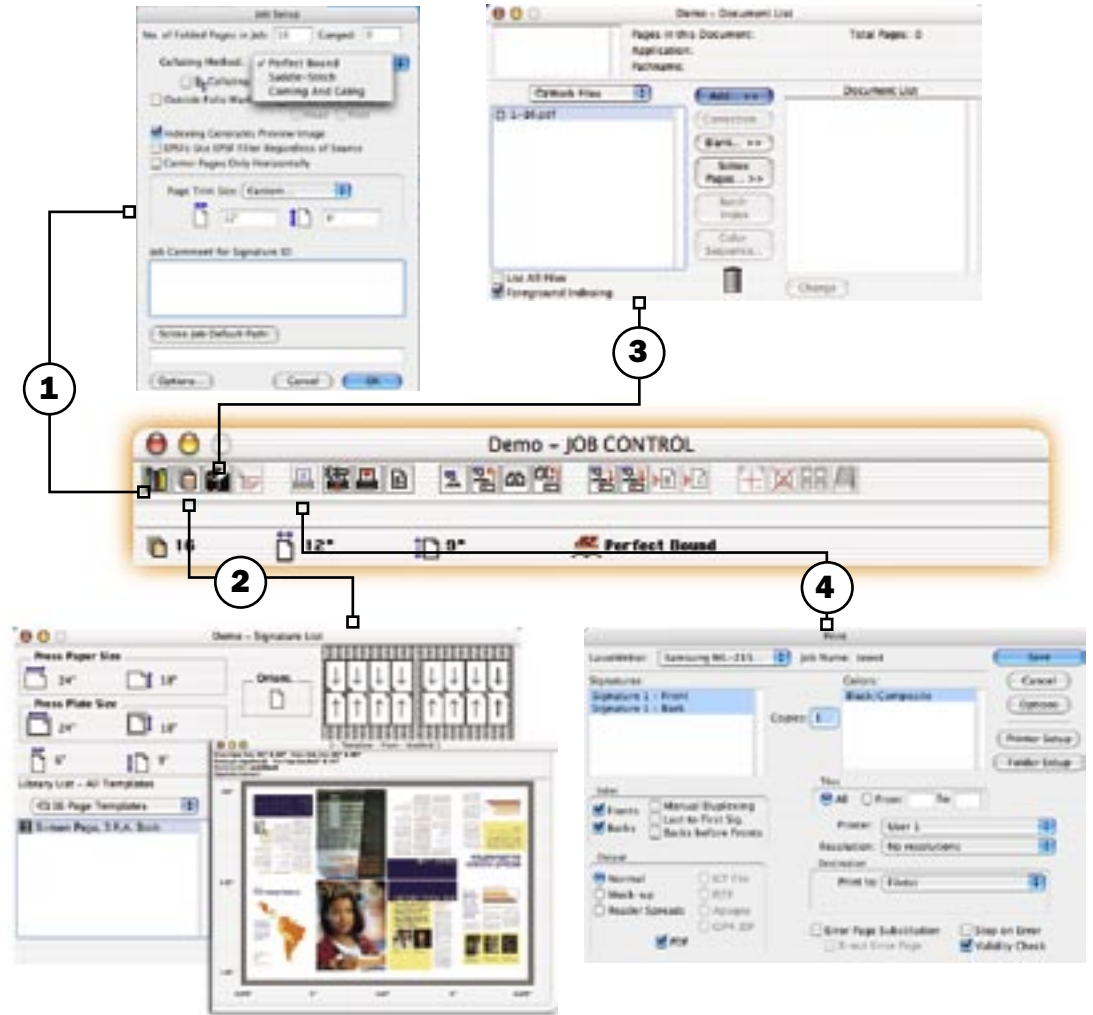
Create you own color bar (up to 8 colors) and customize with different densities, line screen and use special patterns. Impostrip can also import any press marks for regular placement.

- The created Color Bar Editor mark is embedded in the template and can be used by all workstations
- Can replace press manufacturer's color bar
- Automatically fits any press sheet size
- Automatic remapping of spot colors
- Multiple layering

## QuickVIEW

Imposition workflow with Imposition is simple and intuitive. In four easy steps you can impose your files from the handy Job Control Bar.

- 1. Job Setup Button** - provides access to set the parameters for your print job. Number of pages, bindery...
- 2. Signature List Button** - allows select from an existing template from the Imposition library or you may create your own with custom numbering, add crop marks, color bars, custom EPS marks etc.. Also get a full imposed PS, PDF, EPS Signature preview after adding your files.
- 3. Document List Button** - add, remove or replace files you wish to impose
- 4. Print Button** - select print options, **PS, PDF, JDF, PJTF**, tiling options, punch set-up and select plates you wish to print... and you have just imposed a file!



## QuickAutomatedWorkflow

Imposition is a simple solution for a client-server imposition workflow using dynamic templates. A couple of mouse clicks and you are installed and ready to automatically drop files into a hot folder and output your files to proof or to final output.

- 1.** Imposition client creates a hot folder linked to a dynamic template
- 2.** Source Files are dropped into the proper template hot folder
- 3.** Imposition Server queries all the hot folders defined on the network - if files are found, it will start indexing the files, count the pages, then paginate the job as per the page count following the template specifications. It will then output the job to the output device set in the template. Use a single hot folder to output any size jobs.

**Automated Imposition workflow complete!**

**ULTIMATE**  
www.imposition.com

**Ultimate**  
1.800.363.3590

514.938.9050  
info@imposition.com